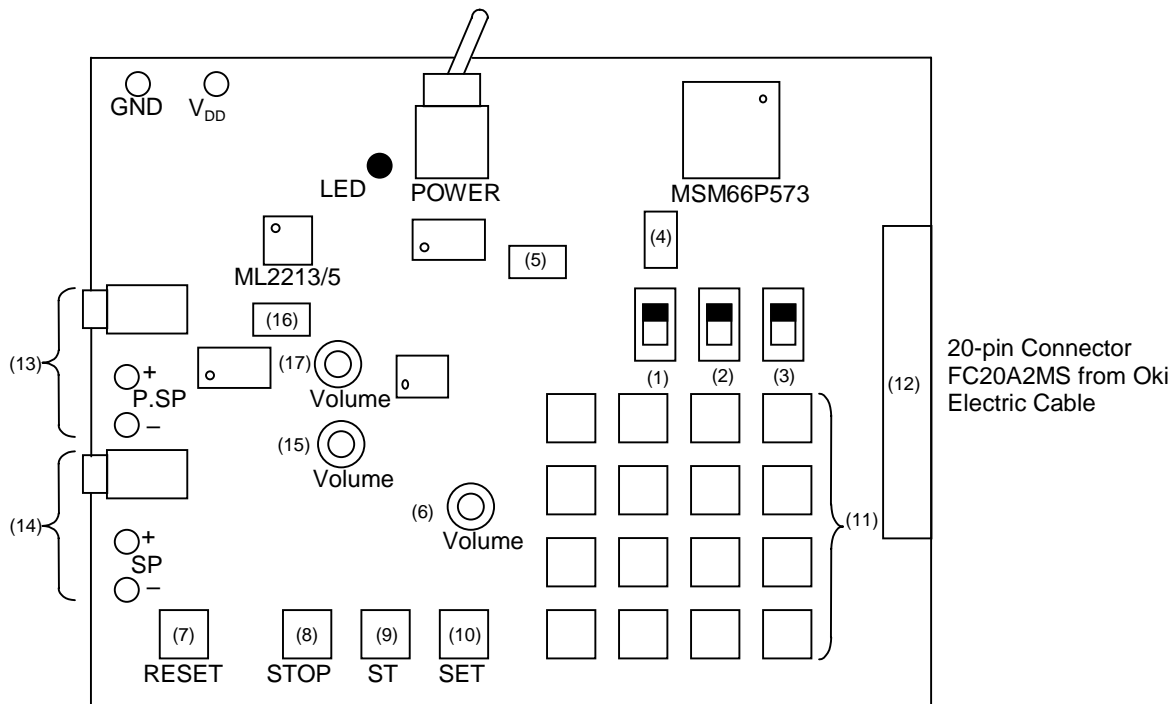


ML2210 Family Demo Board

Demonstration Board for ML2210 Family

BOARD LAYOUT**SETTING THE BOARD**

- (1) Standalone/MCU Interface Selector
Push this switch to the STD side when you use the board with the on-board MCU (MSM66P573) in standalone mode, push it to the MCU side when you control the board with an external MCU in MCU interface mode.
- (2), (3) MCU Clock Selectors
These selectors are used to select a clock frequency for the CLK input to the ML2213 from the on-board MCU. Set both of these selectors to "H".
- (4) Clock Source Selector Jumper
Set this jumper to the EXT side when you make the CLK input to the ML2213 from an external source via the 20-pin connector. Set the jumper to the MCU side when the CLK input comes from the on-board MCU, or to the INT side if you use a ceramic oscillator as a timing source for CLK input.
(For demonstration use, set this jumper to the INT side.)
- (5) BUSYB/NAR Selector
- (6) Dynamic Speaker Amplifier Volume Control
Turn the control clockwise to increase the sound level, and counterclockwise to decrease the sound level.
- (7) RESET Button
To reset the system, push down this button.

- (8) **STOP Button**
To stop playing during playback, push down this button.
- (9) **Start (ST) Button**
To start playing the selected phrase, push down this button.
- (10) **SET Button**
To enter the selected phrase address, push down this button.
- (11) **Phrase Address Selector Pad**
You can select a phrase address between 00 and FF by using this pad.
- (12) **20-pin Connector**
If you control the board with an external MCU via the MCU interface, you can input control signals through this 20-pin connector. The following table shows Pin Layout of the connector.

Connector Pin	Symbol	Connector Pin	Symbol
1	V _{DD}	11	NC
2	V _{DD}	12	SI
3	V _{DD}	13	NC
4	SD	14	RESETB
5	NC	15	NC
6	XT	16	CSB
7	NC	17	BUSYB/NAR
8	NC	18	NC
9	NC	19	GND
10	NC	20	GND

- (13) Pins used to connect Piezo-speaker
- (14) Pins used to connect Dynamic speaker
- (15) Piezo-speaker Volume Control
Turn the control clockwise to increase the sound level, and counterclockwise to decrease the sound level.
- (16) Vref Selector (for ML2215 only)
Set the jumper to the VREF side when you use Vref-function, or to the MAX side if you do not use Vref.
- (17) Vref Volume Control (for ML2215 only)
Turn the control counterclockwise to increase the sound level, and clockwise to decrease the sound level.

SELECTING AND PLAYING A PHRASE

To start playing, enter a phrase address using the Phrase Address Selector Pad (11) first, then push down the SET button (10) and the ST button (9) in sequence.

To stop playing, push down the STOP button (8).

The phrase address selected with the SET button remains unchanged until you reset the address using the RESET button (7).

To replay the same phrase, push the ST button again.

You can select and play multiple phrases continuously by repeating “Enter a phrase address and push down SET + ST” procedure.

(Operation Example)

If you want to play the phrase at address "A3", push

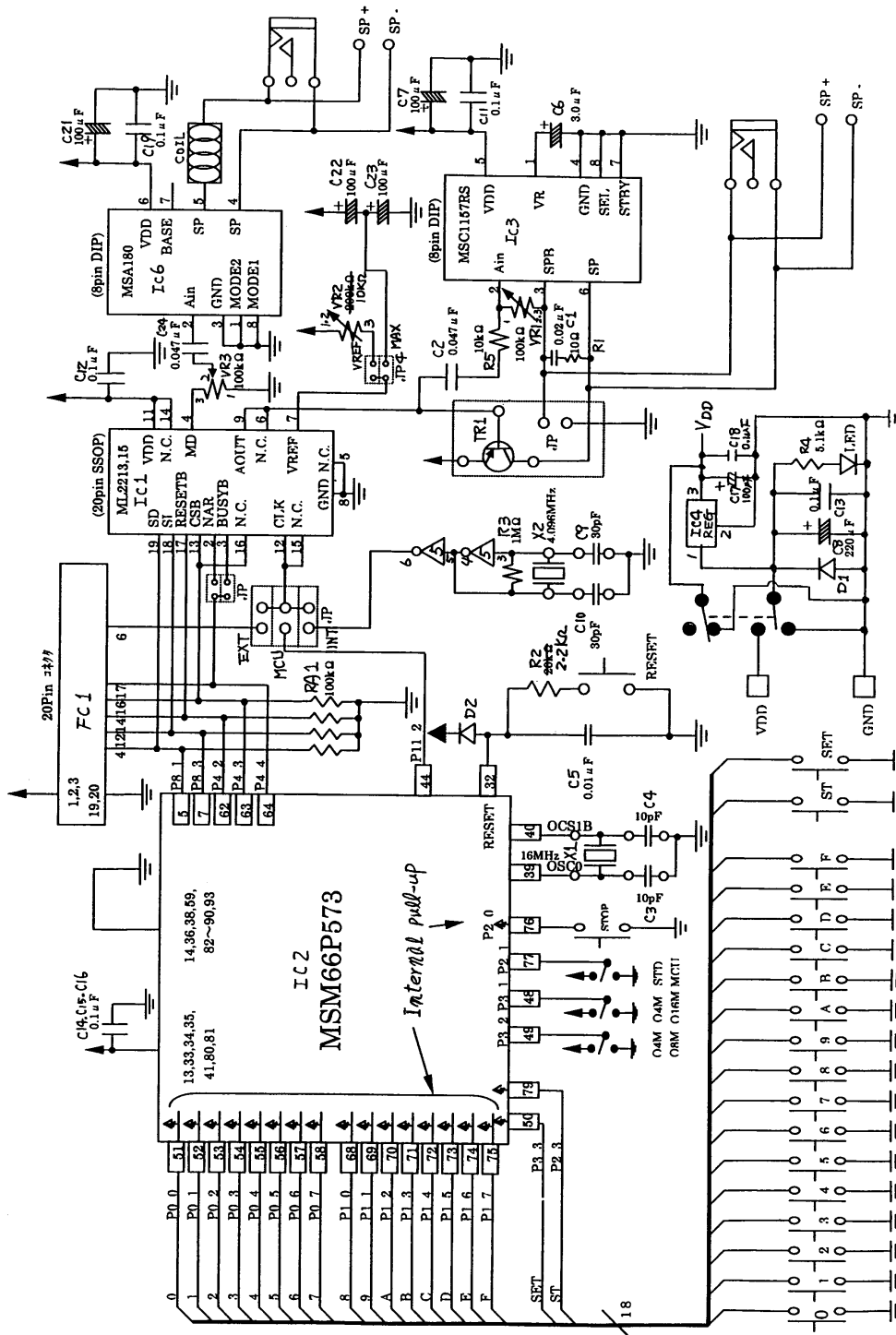
A + **3** + **SET** + **ST**

And, if you push

B + **4** + **SET** + **ST**

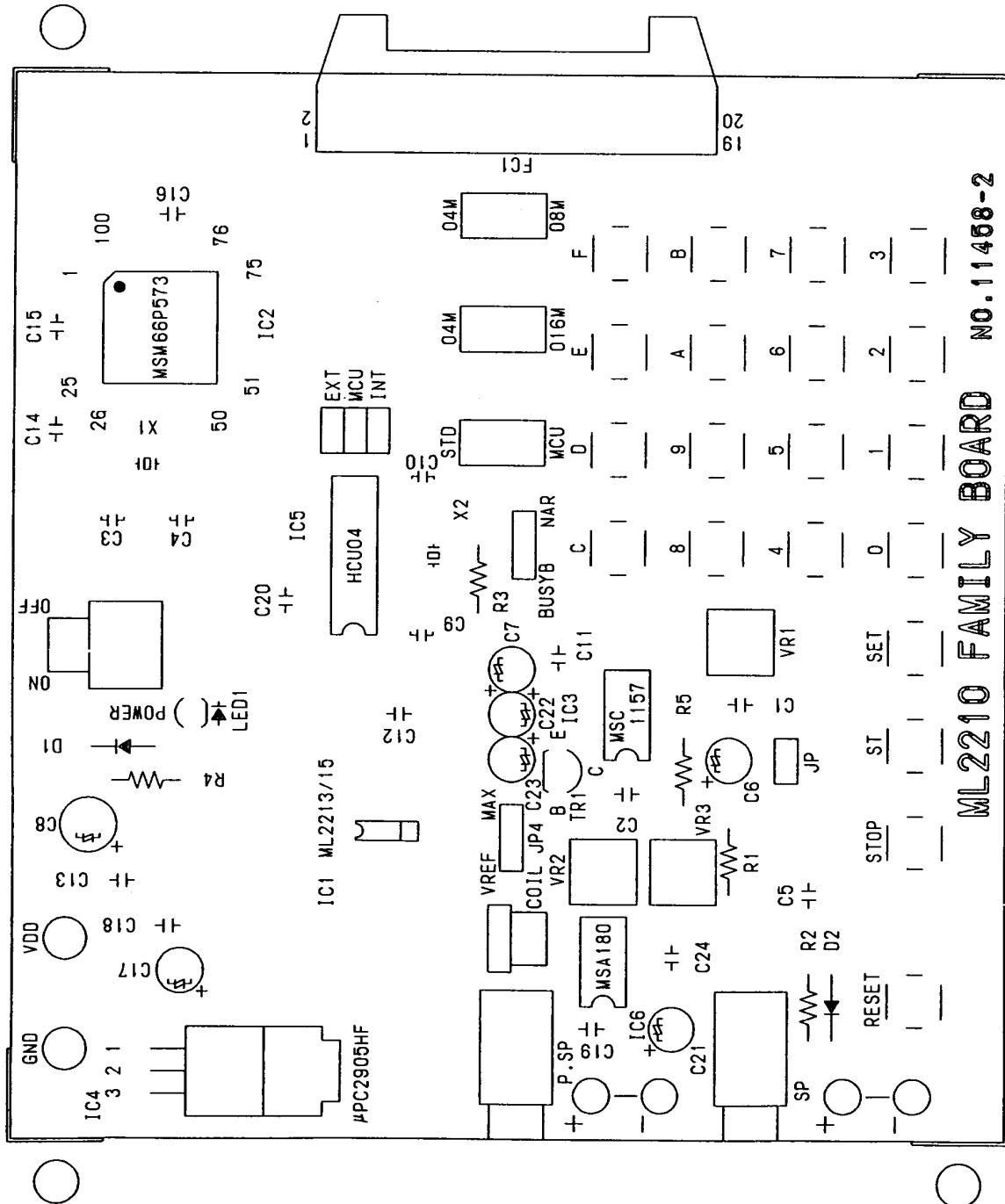
right after the first sequence, the board plays the phrase at address "B4" in succession after playing the phrase at address "A3".

CIRCUIT DIAGRAM



PATTERN LAYOUT

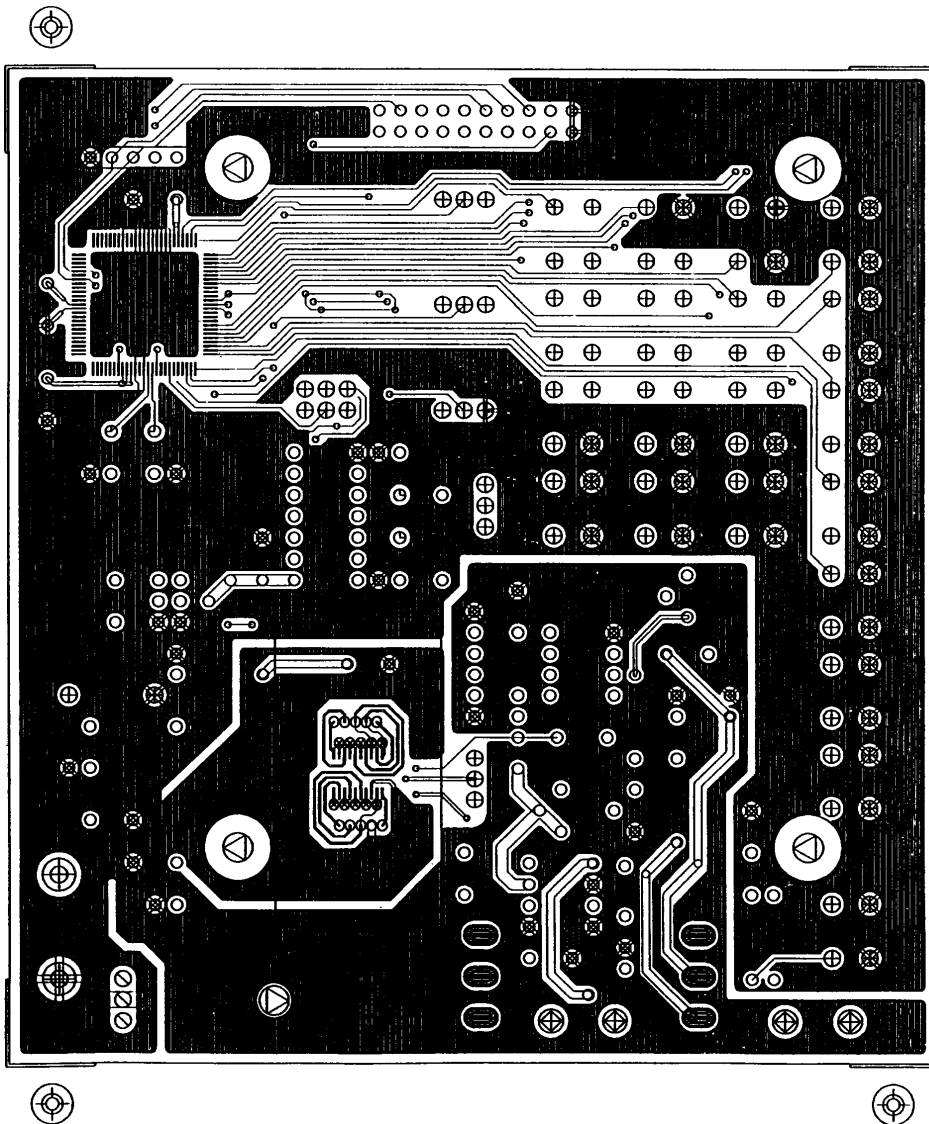
Silk Screen



Mounting Side

NO.11458-2 S=2/1 CAD/CAM	
SYMBOL	HOLE
1	ROUND φ0.1 TH
2	GUIDE φ0.5 TH
3	φ0.8
4	φ1.4
5	φ1.1X1.15 TH
6	φ1.1X1.3 TH
7	φ1.5 TH
8	φ2.0 TH
9	φ2.0 TH
10	φ2.4X4.0 TH
11	φ3.0 TH
12	φ4.0 TH
	φ3.5 NTH

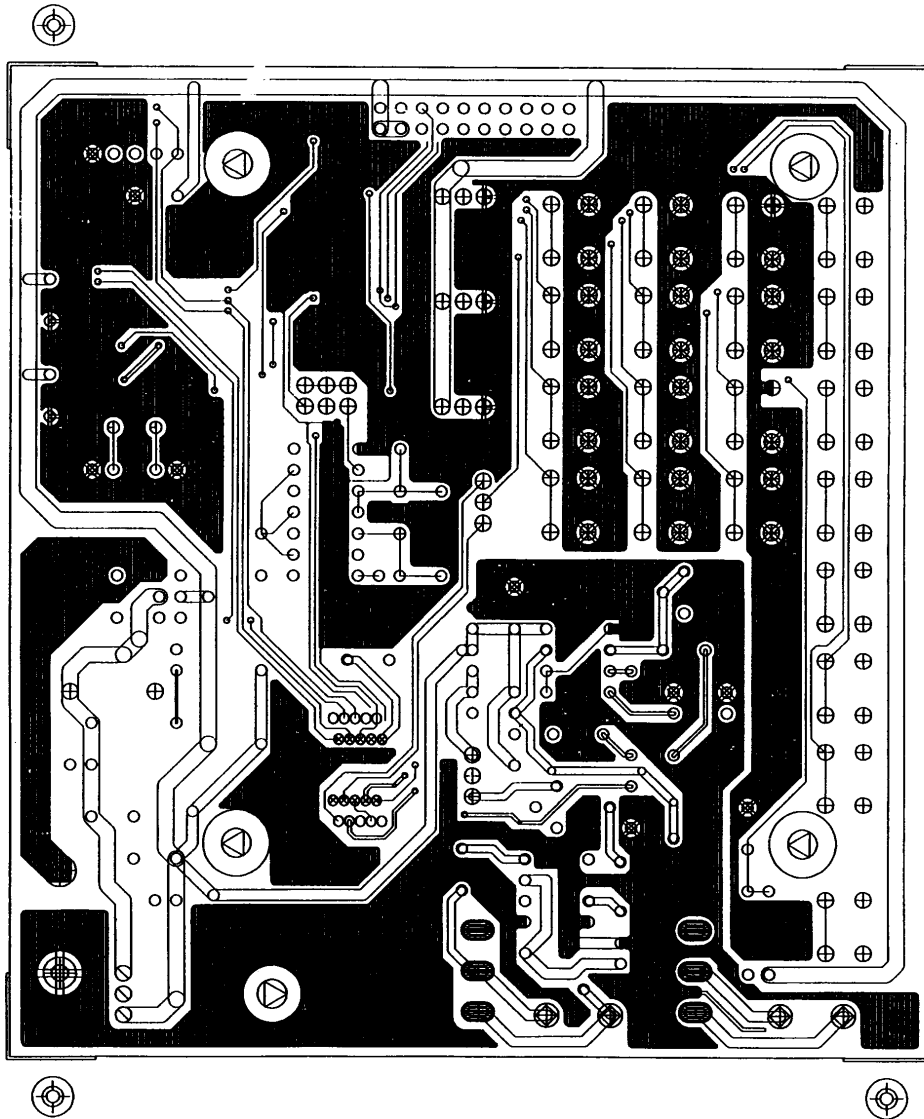
SYMBOL	BUHIN	HANDA	mm
1	0.25		
2	0.3		
3	0.5		
4	1.0		
5	1.4		
6	2.0		



Solder Side

NO.11458-2 S=2/1 CAD/CAM		ROUND
SYMBOL	HOLE	GUIDE
1	⊕ φ0.1 TH	
2	○ φ0.5 TH	φ0.8
3	○ φ0.8 TH	φ1.4
4	⊗ φ0.7 TH	φ1.1X1.15
5	○ φ0.8 TH	φ1.1X1.3
6	⊗ φ0.9 TH	φ1.5
7	⊕ φ1.0 TH	φ2.0
8	⊗ φ1.2 TH	φ2.0
9	⊕ φ1.2X2.5 TH	φ2.4X4.0
10	⊕ φ1.6 TH	φ3.0
11	⊕ φ1.6 TH	φ4.0
12	⊕ φ3.5 NTH	

SYMBOL	BUHIN MEN	HANDA MEN
1	—	0.25 mm
2	—	0.3 mm
3	—	0.5 mm
4	—	1.0 mm
5	—	1.4 mm
6	—	2.0 mm



NOTICE

1. The information contained herein can change without notice owing to product and/or technical improvements. Before using the product, please make sure that the information being referred to is up-to-date.
2. The outline of action and examples for application circuits described herein have been chosen as an explanation for the standard action and performance of the product. When planning to use the product, please ensure that the external conditions are reflected in the actual circuit, assembly, and program designs.
3. When designing your product, please use our product below the specified maximum ratings and within the specified operating ranges including, but not limited to, operating voltage, power dissipation, and operating temperature.
4. Oki assumes no responsibility or liability whatsoever for any failure or unusual or unexpected operation resulting from misuse, neglect, improper installation, repair, alteration or accident, improper handling, or unusual physical or electrical stress including, but not limited to, exposure to parameters beyond the specified maximum ratings or operation outside the specified operating range.
5. Neither indemnity against nor license of a third party's industrial and intellectual property right, etc. is granted by us in connection with the use of the product and/or the information and drawings contained herein. No responsibility is assumed by us for any infringement of a third party's right which may result from the use thereof.
6. The products listed in this document are intended for use in general electronics equipment for commercial applications (e.g., office automation, communication equipment, measurement equipment, consumer electronics, etc.). These products are not authorized for use in any system or application that requires special or enhanced quality and reliability characteristics nor in any system or application where the failure of such system or application may result in the loss or damage of property, or death or injury to humans. Such applications include, but are not limited to, traffic and automotive equipment, safety devices, aerospace equipment, nuclear power control, medical equipment, and life-support systems.
7. Certain products in this document may need government approval before they can be exported to particular countries. The purchaser assumes the responsibility of determining the legality of export of these products and will take appropriate and necessary steps at their own expense for these.
8. No part of the contents contained herein may be reprinted or reproduced without our prior permission.

Copyright 2000 Oki Electric Industry Co., Ltd.