



## PTC Thermistor (POSISTOR®)



## Application Manual



*Innovator  
in Electronics*

**Murata  
Manufacturing Co., Ltd.**

**Cat.No.R16E-4**



#### **for EU RoHS Compliant**

- All the products on this catalog are complied with EU RoHS.
- EU RoHS is "the European Directive 2002/95/EC on the Restriction of the Use of Certain Hazardous Substances in Electrical and Electronic Equipment".
- For more details, please refer to our website 'Murata's Approach for EU RoHS' (<http://www.murata.com/info/rohs.html>).

<b>POSISTOR® Application and Variety List</b>	<b>2</b>
<b>1 Characteristics of POSISTOR®</b>	<b>3</b>
1. Introduction	3
2. Characteristics of POSISTOR®	3
<b>2 The basic design data</b>	<b>4</b>
1. Resistance - temperature characteristics	4
2. Voltage - current characteristics (Static characteristics)	5
3. Current - time characteristics (Dynamic characteristics)	6
<b>3 Structure of POSISTOR®</b>	<b>7</b>
<b>4 Practical applications of POSISTOR®</b>	<b>8</b>
1. Heating (Automatic temperature adjustment heater)	8
2. For temperature sensor and temperature compensation	9
3. For current control	11
<b>5 Terms</b>	<b>12</b>
■Strict observance	12
■Notice	12

POSISTOR® and "POSISTOR" in this manual are the trademarks of Murata Manufacturing Co., Ltd.

<b>CONTENTS</b>	
<b>1</b>	<b>Characteristics of POSISTOR®</b>
<b>2</b>	<b>The basic design data</b>
<b>3</b>	<b>Structure of POSISTOR®</b>
<b>4</b>	<b>Practical applications of POSISTOR®</b>
<b>5</b>	<b>Terms</b>

# POSISTOR® Application and Variety List

Application Target device		Over current Protection		Overheat Sensing		Temp compensation	Heater		Motor starter
		Chip type PRG	Lead type PTGL	Chip type PRF	Lead type PTFL PTFM	Lead type PTRL	Contact type PTWSB PTWTA	Hot air type PTWH	Case type PTH6M PTH7M PTH8M
AV equipment	Plasma TV	○	○	○	○	○			
	LCD TV	○	○	○	○				
	Projection TV	○	○	○	○				
	CATV		○						
	STB		○						
	Video camera	○		○					
	Digital camera	○		○					
	DVD recorder	○		○					
	VTR	○	○	○					
	Audio	○	○	○	○				
	Electric keyboard, Electronic music instrument	○	○	○	○				
	Digital mobile audio	○		○					
	MD/CD player	○		○					
Information equipment	TV game	○	○	○					
	Portable game	○		○					
	Laptop	○		○					
	Desktop computer	○		○					
	Server	○	○	○	○				
	Printer	○	○	○	○				
	Scanner	○		○					
	LCD display	○	○	○	○				
	USB access device	○							
	HDD			○					
	CD/DVD-ROM/RAM			○		○			
	Copy machine	○	○	○	○				
	Electronic dictionary/databook	○		○					
Communications equipment	Electronic blackboard	○	○	○	○				
	Electronic automatic exchange		○						
	Transmission equipment		○						
	PBX		○						
	Cordless telephone		○						
	Fax machine	○	○	○	○				
	Modem		○						
	Cellular phone	○		○					
	Headset			○					
	Cellular phone base station	○	○	○	○				
	Intercom	○	○						
Car electronics	Engine control ECU	○		○					
	Drive control ECU	○		○					
	Air-bag	○							
	Anticollision radar			○					
	ABS/ESC	○		○					
	Instrument/display panel, Meter			○					
	Rechargeable battery for EV/HEV		○	○					
	Car air conditioner			○				○	
	Heater, HVAC							○	
	HID/LED headlight, AFS	○	○	○					
	LED tail light	○	○	○					
	LED interior light	○		○					
	Retractable electric mirror		○						
Home electronics Household equipment	Door lock, trunk opener		○						
	Power seat		○						
	Shock absorber		○						
	VICS, ETC			○					
	Burglar alarm	○	○						
	Car navigation	○	○	○					
	Car audio	○	○	○	○				
	Refrigerator	○	○	○					○
	Microwave, Oven	○	○	○					
	Electric rice-cooker		○	○			○		
	IH cooking device		○	○					
	Air conditioner	○	○	○				○	○
	Fan heater			○	○				
Power supply	Cleaner		○	○					
	Bath dryer							○	
	Clothes washer, cloth dryer		○					○	
	Futon dryer							○	
	Hot-air heater							○	
	Electric pot						○		
	Ventilator		○						
	hot-water pot		○	○	○				
	Humidifying device						○		
	Inhaler						○		
	Illumination device	○	○	○	○				
	Massage chair, healthcare equipment	○	○	○	○		○		
	Curling iron						○		
	Potable compact iron						○		
	Hot water spray toilet seat			○	○		○	○	
	Electric power tool	○	○	○	○				
	Electric mosquito extermination, fragrance device						○		
	Switching supply	○	○	○	○				
	Inverter power	○	○	○	○				
	AC adapter, battery charger								



## 2 The basic design data

### 1. Resistance - temperature characteristics

The POSISTOR® has resistance - temperature characteristics that cause its resistance to exponentially increase when the part's temperature exceeds its Curie-point (Cp), the critical temperature where the resistance value increases dramatically. Typically above the Cp, the resistance of POSISTOR increase at rate of 15% to 60% per degC. There are many kinds of Cp available (from 40degC to 280degC, as shown in Fig. 1, table 2 and table 3) which allows for the easy selection of a suitable Cp for each application.

Some special POSISTOR, products with a Cp below room temperature, exhibit a more linear rate of resistance increase of 5% per degC, above its Cp. If a resistor is connected with the POSISTOR in series or parallel, the resistance - temperature characteristics

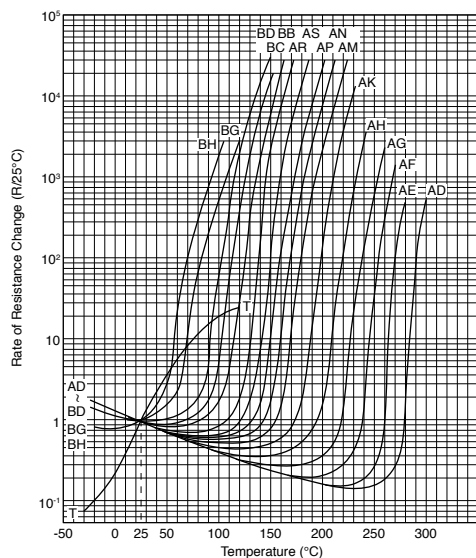


Fig. 1

■Table 2 Resistance - temperature characteristics

Classification	Temperature characteristics	Description of characteristics	Applications
(i)	T	Exhibits a generally uniform positive resistance temperature characteristics (about 5%/degC) within the temperature range of room temperature to 60degC	Temp. compensation, Temp. sensing
(ii)	BH-AR	Exhibits an almost linear resistance increase between room temp and the Cp, with an abrupt resistance increase above the Cp. Cp is available in a range from 40degC to 120degC, selected by temperature characteristics	Temp. sensing, Overheat sensing, Motor starting, Heaters
(iii)	AR-AD	Exhibits a less than linear resistance increase from room temperature to the Cp, with an abrupt resistance rise over the Cp.	Temp. sensing, Overheat sensing, Over current protection, Motor starting, Heaters

can be changed as shown in Fig. 2 and Fig. 3. In the case where a POSISTOR is used for temperature compensation, of a transistor for example, this method is useful to obtain suitable temperature characteristics.

■Table 3 Temp. Characteristics (T.C.) and Cp

T.C.	Cp (degC)	T.C.	Cp (degC)
AD	280	BA	110
AE	260	BB	100
AF	240	BC	90
AG	220	BD	80
AH	200	BE	70
AK	180	BF	60
AL	170	BG	50
AM	160	BH	40
AN	150	T	(-50)
AP	140		
AS	130		
AR	120		

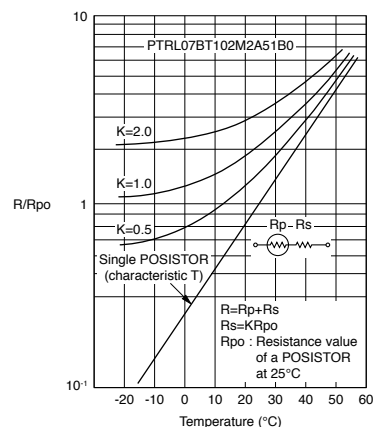


Fig. 2 Insertion of fixed resistance in series with POSISTOR

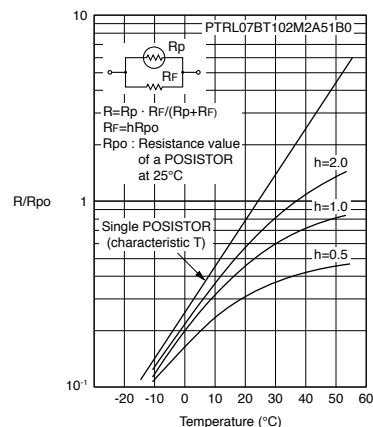


Fig. 3 Insertion of fixed resistance in parallel with POSISTOR

## The basic design data 2

### 2. Voltage - current characteristics (Static characteristics)

The POSISTOR® can be used as a constant temperature heater with an automatic temperature adjustment function and can maintain constant wattage, even over voltage fluctuation, if the current through the POSISTOR is maintained above its maximum current point.

The POSISTOR can provide over-current protection if it is connected in series in a circuit. If current through the POSISTOR is less than the maximum current point provided as "protective current" in the spec, the POSISTOR acts like a regular fixed value resistor. If current exceeds the protective current, the POSISTOR will sharply increase in resistance due to self heating and reduce the current flow, providing protection to the rest of the circuit.

By adding a series or parallel resistor to the POSISTOR, the voltage-current characteristics can be changed as shown in Fig. 5. As an example, a resistor in parallel with the POSISTOR can provide a constant current function with increasing voltage (see curves 1, 2, and 3 in Fig. 5.)

When voltage is applied to the POSISTOR, self-heating can occur due to current flow. If current flow through the POSISTOR, exceeds the maximum current point, then self heating of the POSISTOR may cause the temperature of the part to exceed the CP and its resistance raises dramatically. As long as the maximum current point is exceeded, the POSISTOR will stabilize above the Cp and high resistance will be maintained. As current is reduced below the maximum current point, self heating is reduced and the POSISTOR will cool to below the CP, assuming an external heat source is not present.

With the voltage - current characteristics shown in a double logarithmic graph, the line (charted as I vs. V) is shown to increase in a 45 deg. straight line (constant resistance region of the chart, where the Thermistor's resistance is stable) until the maximum current point is reached. Beyond the maximum current point, the line decreases at a 45deg straight line (constant power region of the chart, where the Thermistor's resistance sharply increases).

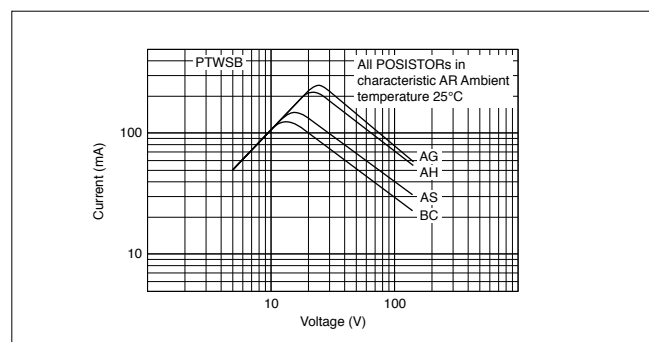


Fig. 4-1 Changing Curie point

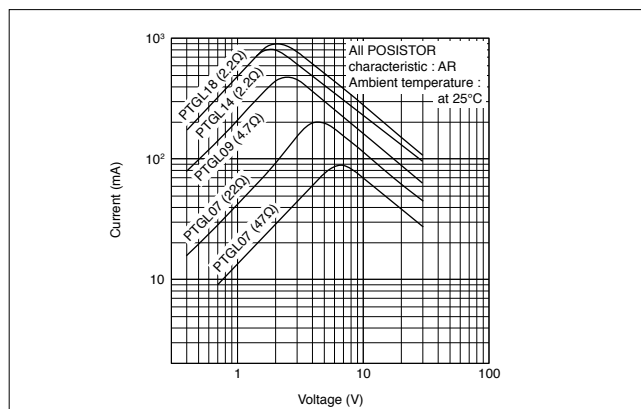


Fig. 4-2 Changing dimension and resistance value

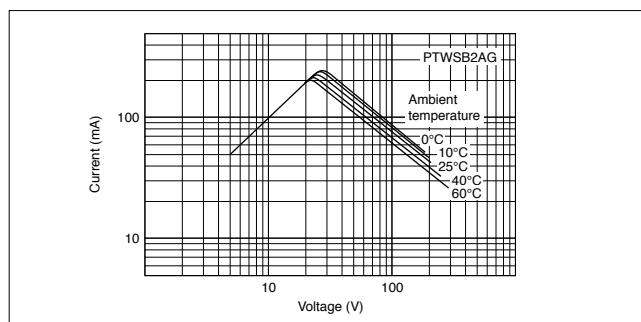


Fig. 4-3 Changing ambient temperature

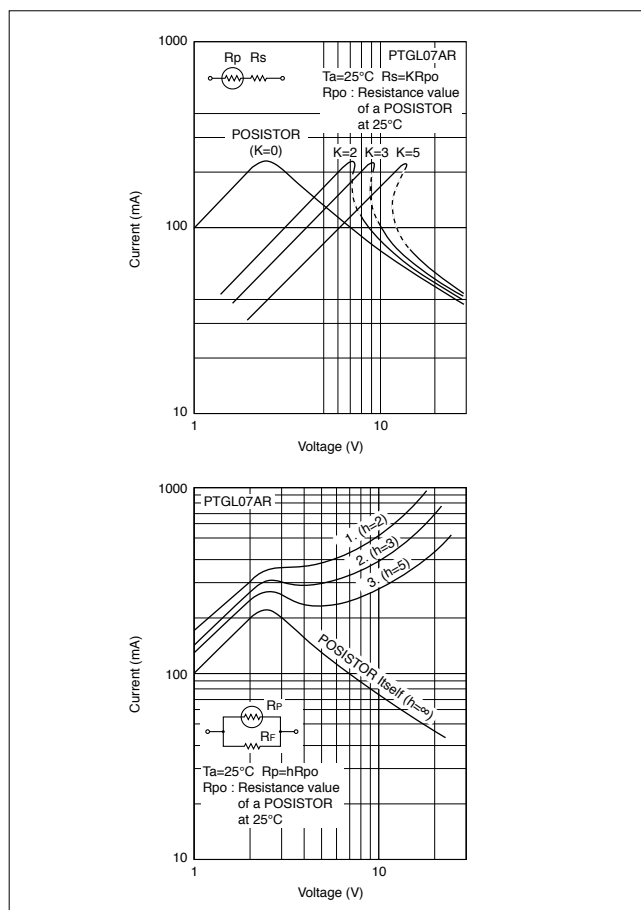


Fig. 5 Change of static characteristic of POSISTOR by series and parallel resistance

## 2 The basic design data

### 3. Current - time characteristics (Dynamic Characteristics)

If a specific voltage, above the V-I chart's maximum current point, is applied to the POSISTOR<sup>®</sup> a large amount of current will flow through POSISTOR, because its resistance is low. The POSISTOR will start to self-heat due to the current, and over a period of time the temperature of the POSISTOR will exceed the  $C_p$  and its resistance will sharply increase. Due to this, the current will eventually stabilize at a constant level. (Fig. 6-1 and 6-2)

If the initial applied voltage is increased, the time needed for the POSISTOR to self-heat beyond its  $C_p$  is reduced, due to the larger current flow causing faster self-heating of the POSISTOR. (Fig. 6-3)

If a resistor is connected with POSISTOR in series or in parallel, the dynamic characteristics can be changed as well. (Fig. 7)

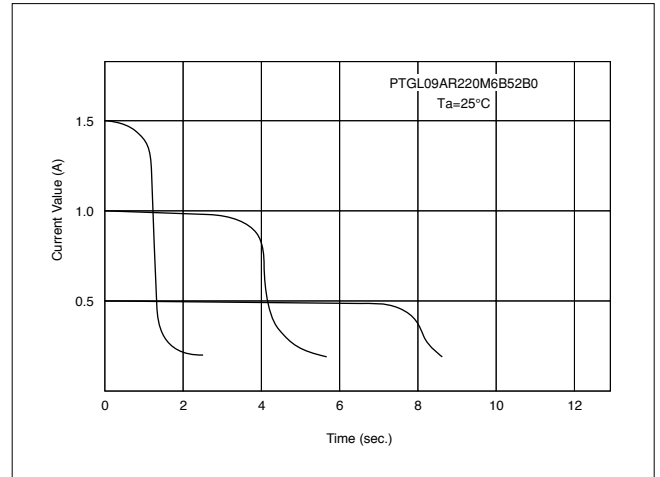


Fig. 6-3 Inrush current and attenuation

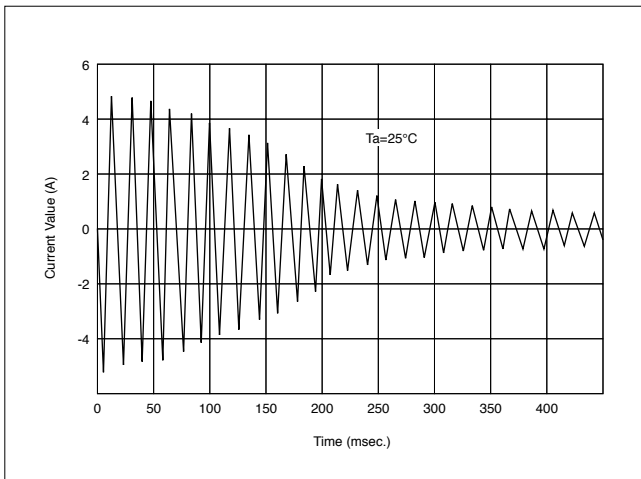


Fig. 6-1 Current - time characteristic (AC)

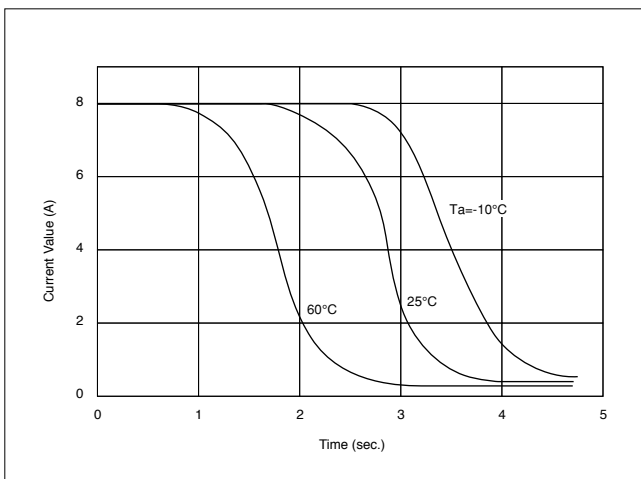


Fig. 6-2 Current - time characteristic (DC, Ambient temperature change)

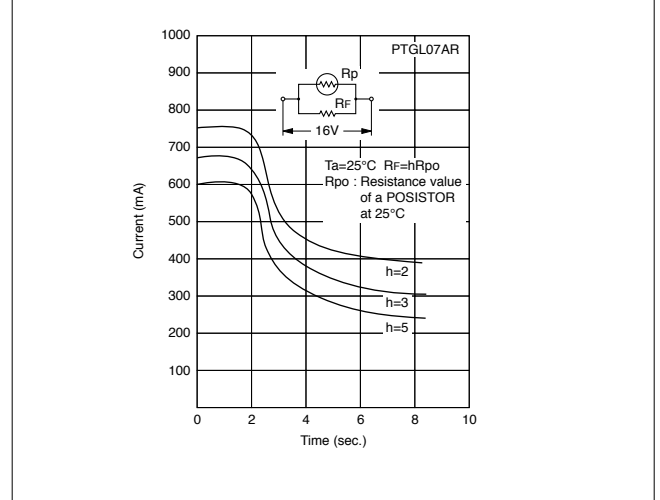
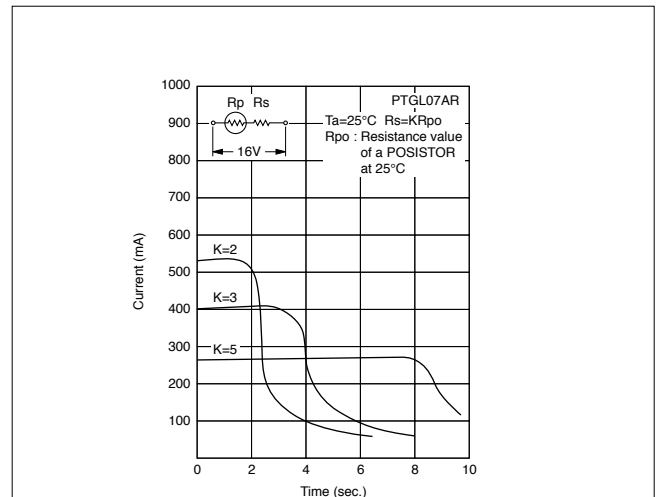


Fig. 7 Change of dynamic characteristic of POSISTOR by series or parallel resistance



# 3 Structure of POSISTOR®

Leaded products of POSISTOR, as shown in Fig. 8, can have their POSISTOR element either: soldered to lead wires and its surface then coated with epoxy resin, or the element can be held in place by spring terminals and encased in a plastic housing. In the case of the latter, the spring terminals also provide the electrical connection and exit the housing as lead terminals. The shape of the POSISTOR can either be square or round. Recently, chip type POSISTORS are becoming more common.

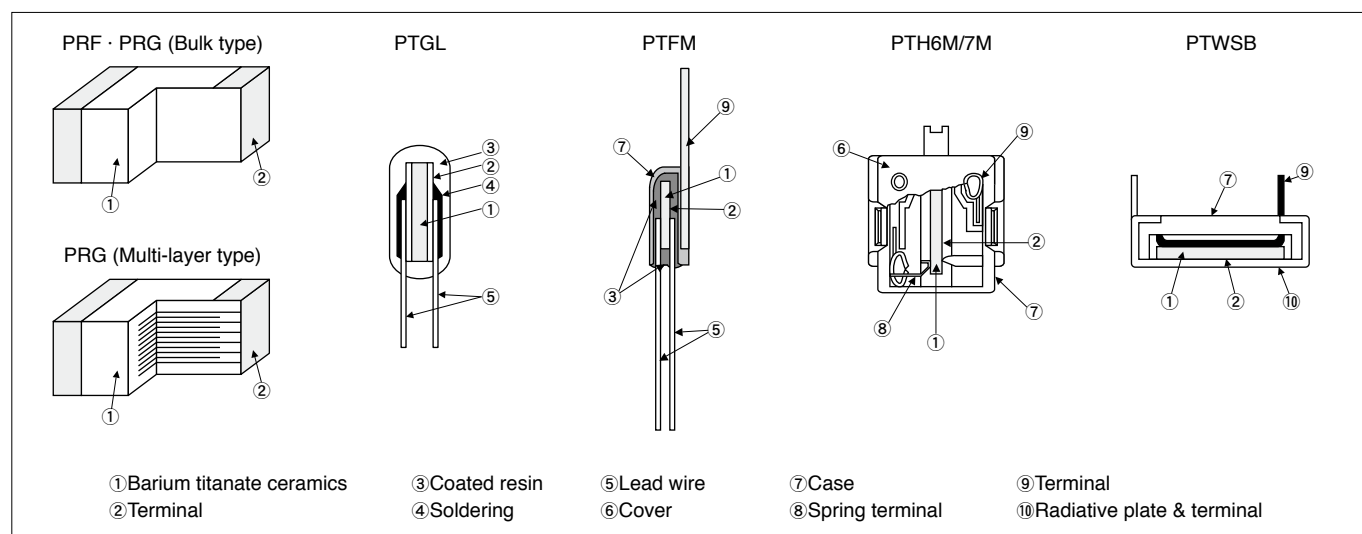


Fig. 8

# 4 Practical applications of POSISTOR®

## 1. Heating (Automatic temperature adjustment heater)

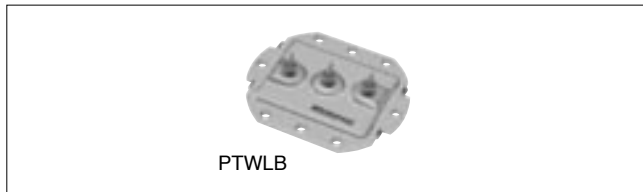
### 1. For general heater

POSISTOR can be used as a constant temperature heater that is self-regulating. It does not need a thermostat to control temperature and inherently protects against abnormal temperature rise and failure. Constant temperature can be maintained by the varying applied voltage.

#### ■General heaters



#### ■Low thermal resistance type heaters capable of larger power output



### 2. For Air Heating

POSISTOR pills (pellets) are mounted in an aluminum radiator that is suitable for air heating. The power and the temperature can be easily adjusted by varying the speed of the fan that blows air over the radiator. Also, its power characteristics will change with changes in ambient temperature, as shown Fig. 10. When the ambient temperature decreases, the power increases. When the ambient temperature increases, the power is reduced.



### 3. For constant temperature control:

If a POSISTOR is connected to another heater in series, the POSISTOR can be used to detect the change of the other heater's temperature and the change of the ambient temperature. (Fig. 11)



#### ■Applications

Electric rice cooker / Electric pot / Hot plate / Inhaler / Humidifying device / General heater / Antifreeze / Fax machine / Copy machine / Portable compact iron / Aromatic instrument and so on.

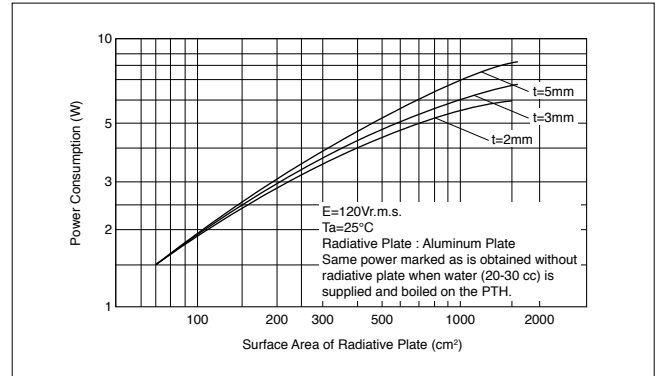


Fig. 9 Characteristics of power consumption

#### ■Applications

Bath dryer / Clothes dryer / Futon dryer / Dish dryer / Hot-air heater / Auxiliary heater and so on

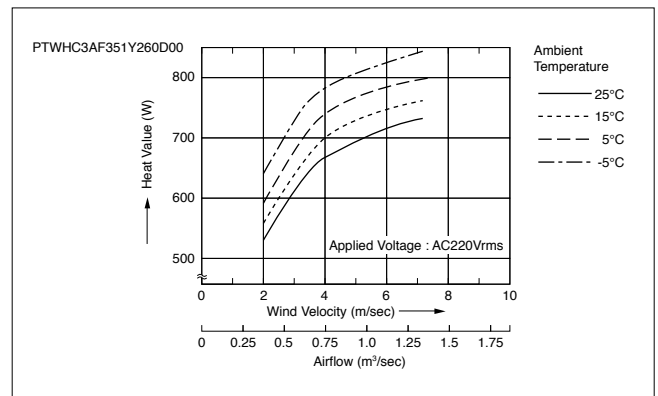


Fig. 10 Heating power characteristics of Air heater

#### ■Applications

Keep-warm plate / Humidifier and so on

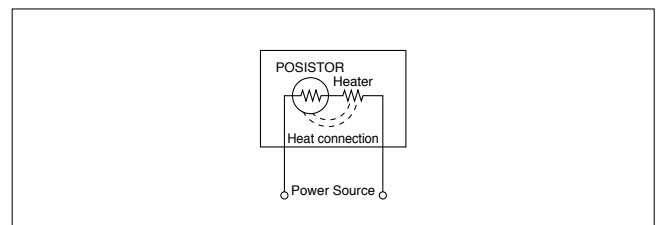


Fig. 11 Heater control

## Practical applications of POSISTOR® 4

### 2. For temperature sensor and temperature compensation

#### 1. For temperature compensation and overheat sensing of transistors

Fig. 12(1) shows a basic circuit for temperature compensation. In biasing the transistor, the resistance of POSISTOR is used. If the transistor overheats, the POSISTOR will heat up as well. As the POSISTOR passes the  $C_p$ , it will go high resistance and unbiased the circuit, and turning off the transistor. In case of Fig. 12(2) and 12(3), it also can be used as an over heat sensor as well.

When POSISTOR is used for temperature compensation, it does not change the input impedance, like a negative temperature coefficient Thermistor (NTC Thermistor), because the POSISTOR is not connected to input circuit in parallel. Therefore, the POSISTOR is suitable for circuits which do not need a change of input impedance as a pulse circuits, regional amplifier, and measurement equipment.

More than two pieces of POSISTOR can cover multi hot spots working with a comparator. Fig. 12-2 shows basic circuit idea to connect multiple POSISTOR in series. When One POSISTOR detects overheat at least, a comparator can work by the sharp temperature-resistance characteristic. It easily allows changing a number of POSISTOR or sensing temperature in the same basic circuit design.

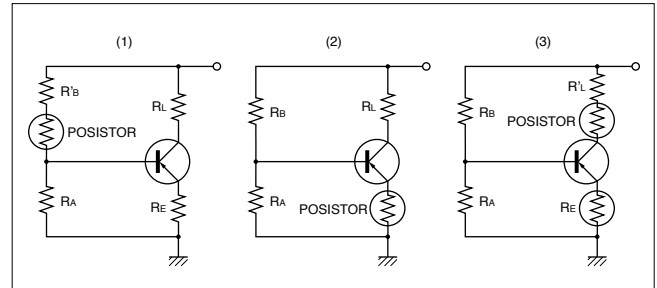


Fig. 12 Temperature compensation and protection of transistor

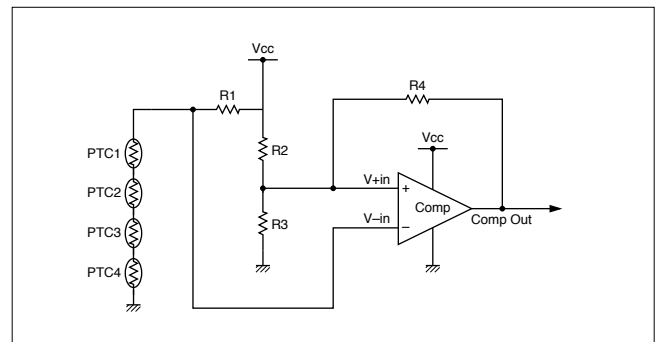
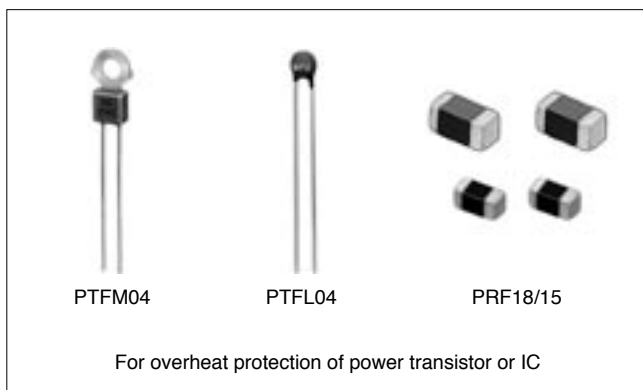


Fig. 12-2 Connection of multiple POSISTOR



#### 2. Overheat sensing for motors and transformers

A POSISTOR can be used for the overheat sensing of motors, transformer winding, bearings, power transistors, and other machinery. Fig. 13(1) shows an example of overheat sensing for motor using a relay. In case of small regular operating current, the circuit can be directly stopped by POSISTOR. In case of larger regular operating currents, the circuit can be stopped by using the POSISTOR with a relay or a thyristor. In either case, POSISTOR is a very easy to use device, because it's small, light, and a two terminals device.

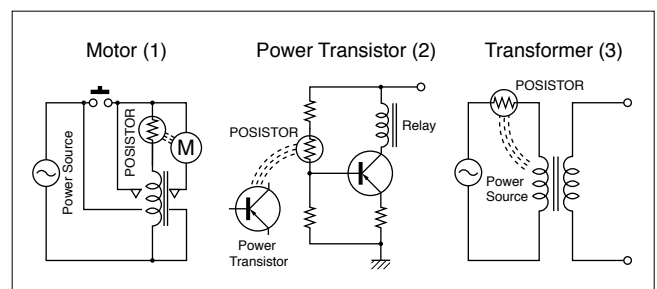


Fig. 13 Protection from overheat by POSISTOR

## 4 Practical applications of POSISTOR®

### 3. For temperature indication

Fig. 14 shows most simple example of a temperature indicator. Temperature is sensed by POSISTOR. If the target temperature is exceeded (determined by which POSISTOR is used), a neon tube lights up.

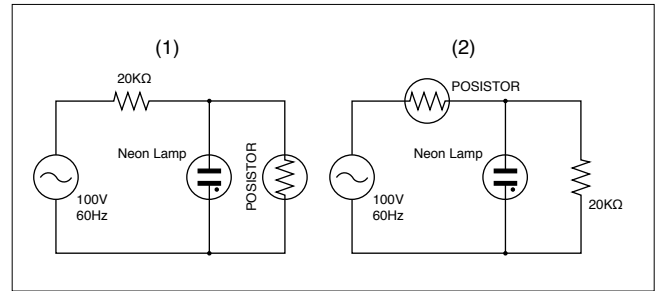
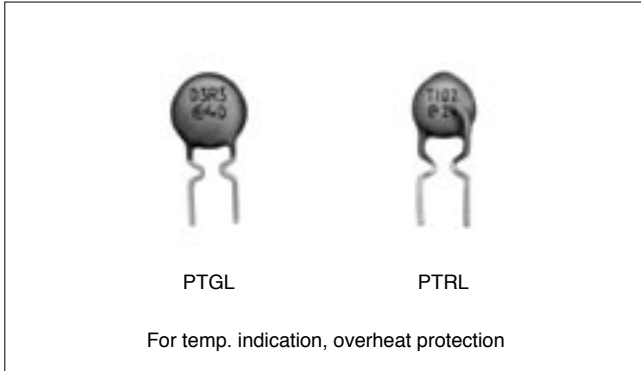


Fig. 14 Temperature indication by POSISTOR

## Practical applications of POSISTOR® 4

### 3. For current control

#### 1. Over current protection

If a circuit's current limit is exceed, a POSISTOR can react to the higher current (self heating) and quickly protect the circuit. (Fig. 15)

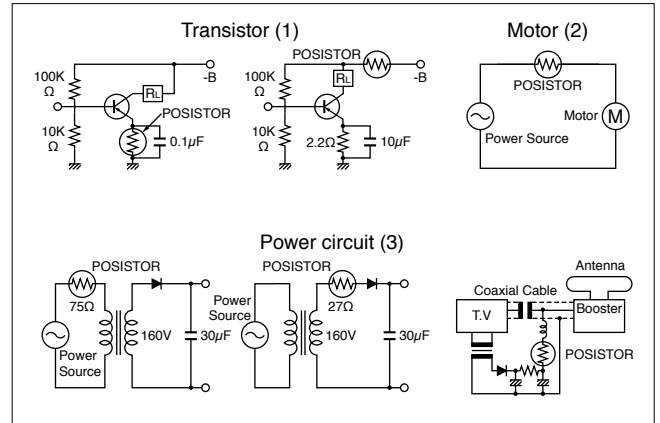
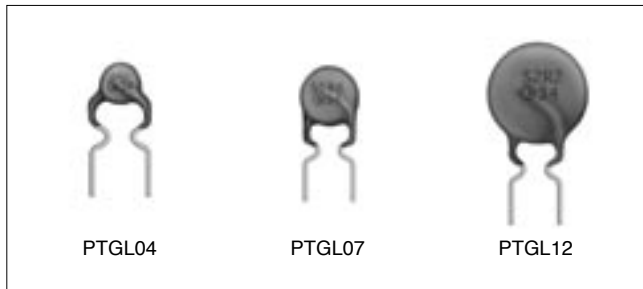


Fig. 15 Protection from over current

#### 2. Delay Circuit

A delay function can be created by using the dynamic characteristics of POSISTOR. There are two methods: one is with the POSISTOR connected in parallel with a relay as in Fig. 16(1) and the other is similar but with series connection, as in Fig. 16(2) and (3).

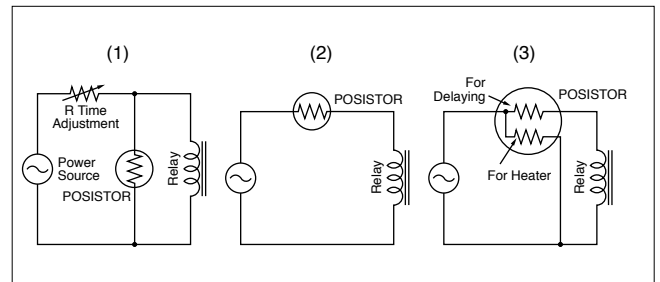
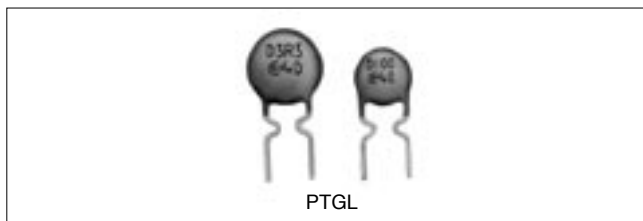


Fig. 16 Delay operation of relay

#### 3. For the control of inrush current

A switching power supply has large inrush current when it first turns on. If POSISTOR is used, instead of a resistor or an NTC Thermistor, the POSISTOR works as inrush current limiter. The POSISTOR self heats due to over current in the case of relay or thyristor's failure and will trip to high resistance, quickly shutting off the current. (Fig. 17)

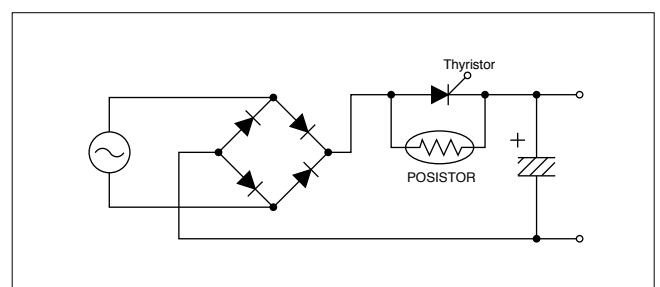


Fig. 17 Inrush current limit circuit

#### 4. For motor starter

If the POSISTOR is used as a contactless starter rely, for compressors as in refrigerators, freezers and air conditioners, strong starting torque can be generated. (Fig. 18(1) to (4))

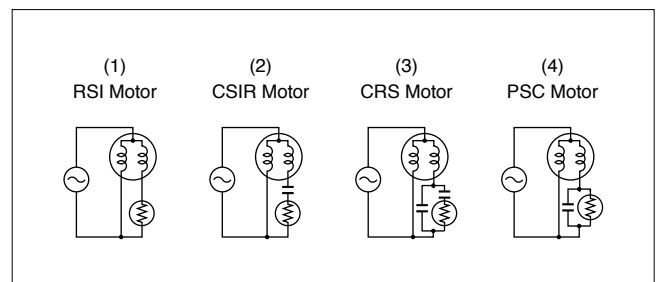


Fig. 18 Motor starting

# 5 Terms

Definitions of typical terms for POSISTOR®s are listed here.

## 1. Initial resistance (R25)

This is the part's resistance value at 25degC which is measured under conditions of 1.0VDC or less, and 10mA or less without self-heating.

## 2. Curie point (C.P.) temperature (Resistance - temperature characteristics)

A POSISTOR maintains almost the same resistance, until certain temperature. After this temperature is exceeded, the resistance of POSISTOR rises up sharply. This transition point is called the "Curie point" or "C.P.". Murata defines this critical temperature to be the 'Curie point' temperature, where the actual resistance value is twice the reference value measured at 25degC.

## 3. Maximum operating voltage

Within the operating temperature range of POSISTOR, it is the largest voltage that can be applied continuously.

## 4. Withstanding voltage

The maximum voltage which the POSISTOR can withstand over a three minute period, at 25deg. To test, the input voltage is raised to withstanding voltage from zero voltage gradually.

## 5. Heat dissipation factor (D)

It is the amount of heat which is lost, over a unit of time, based on 1degC temperature difference between heating element and ambient temperature.

$$W=I \cdot V=D(T-T_0)$$

T: temperature of heating element

T<sub>0</sub>: ambient temperature

D: heat dissipation factor (W/degC)

Generally this value is decided by a size, a structure and material of heating element.

## 6. Thermal time constant (γsec)

It is the time needed, to achieve 0.632 times the temperature difference between T<sub>0</sub> to T<sub>1</sub>.

γ=H/D, Here D, Heat dissipation factor (W/degC), H: Heat capacity (Wsec/degC) This formula is related to dynamic characteristics.

## 7. Operation point

It is an equilibrium condition between self-heating of the POSISTOR and the external radiator.

## ■Strict observance:

POSISTOR is not hermetically sealed, do not use it under the below conditions. If POSISTOR is used in such conditions, they may cause decline of characteristics or may lead to short-circuit type failure.

- Corrosive gas atmosphere (Cl<sub>2</sub>, NH<sub>3</sub>, SO<sub>x</sub>, NO<sub>x</sub> and so on)
- Volatile, flammable gas atmosphere
- Dusty area
- Pressurized air or vacuum atmosphere
- Direct contact with water, standing water on the part, or high humidity.
- Exposure to salt, grease, chemicals, organic solvents
- Place with a lot of vibration
- Anything equivalent to the above mentions

## ■Notice:

POSISTOR should be evaluated, after confirmation of rated value, and using precautions as given in the catalog.



• This PDF catalog is downloaded from the website of Murata Manufacturing co., ltd. Therefore, it's specifications are subject to change or our products in it may be discontinued without advance notice. Please check with our sales representatives or product engineers before ordering.  
 • This PDF catalog has only typical specifications because there is no space for detailed specifications. Therefore, please approve our product specifications or transact the approval sheet for product specifications before ordering.

SUNSTAR传感与控制 <http://www.sensor-ic.com/> TEL:0755-83376549 FAX:0755-83376182 E-MAIL:szss20@163.com

R16E.pdf  
08.9.25

#### **⚠ Note:**

##### 1. Export Control

<For customers outside Japan>

No muRata products should be used or sold, through any channels, for use in the design, development, production, utilization, maintenance or operation of, or otherwise contribution to (1) any weapons (Weapons of Mass Destruction [nuclear, chemical or biological weapons or missiles] or conventional weapons) or (2) goods or systems specially designed or intended for military end-use or utilization by military end-users.

<For customers in Japan>

For products which are controlled items subject to the "Foreign Exchange and Foreign Trade Law" of Japan, the export license specified by the law is required for export.

##### 2. Please contact our sales representatives or product engineers before using the products in this catalog for the applications listed below, which require especially high reliability for the prevention of defects which might directly damage a third party's life, body or property, or when one of our products is intended for use in applications other than those specified in this catalog.

- |                             |  |
|-----------------------------|--|
| ① Aircraft equipment        | ② Aerospace equipment  |
| ③ Undersea equipment        | ④ Power plant equipment  |
| ⑤ Medical equipment         | ⑥ Transportation equipment (vehicles, trains, ships, etc.)   |
| ⑦ Traffic signal equipment  | ⑧ Disaster prevention / crime prevention equipment   |
| ⑨ Data-processing equipment | ⑩ Application of similar complexity and/or reliability requirements to the applications listed above |

##### 3. Product specifications in this catalog are as of March 2008. They are subject to change or our products in it may be discontinued without advance notice. Please check with our sales representatives or product engineers before ordering. If there are any questions, please contact our sales representatives or product engineers.

##### 4. Please read rating and ⚠ CAUTION (for storage, operating, rating, soldering, mounting and handling) in this catalog to prevent smoking and/or burning, etc.

##### 5. This catalog has only typical specifications because there is no space for detailed specifications. Therefore, please approve our product specifications or transact the approval sheet for product specifications before ordering.

##### 6. Please note that unless otherwise specified, we shall assume no responsibility whatsoever for any conflict or dispute that may occur in connection with the effect of our and/or a third party's intellectual property rights and other related rights in consideration of your use of our products and/or information described or contained in our catalogs. In this connection, no representation shall be made to the effect that any third parties are authorized to use the rights mentioned above under licenses without our consent.

##### 7. No ozone depleting substances (ODS) under the Montreal Protocol are used in our manufacturing process.



**Murata Manufacturing Co., Ltd.**

<http://www.murata.com/>

#### Head Office

1-10-1, Higashi Kotari, Nagaokakyo-shi, Kyoto 617-8555, Japan  
Phone: 81-75-951-9111

#### International Division

3-29-12, Shibuya, Shibuya-ku, Tokyo 150-0002, Japan  
Phone: 81-3-5469-6123 Fax: 81-3-5469-6155 E-mail: intl@murata.co.jp

SUNSTAR自动化 <http://www.sensor-ic.com/> TEL: 0755-83376489 FAX: 0755-83376182 E-MAIL: szss20@163.com