



ServoMax[™] Model 200

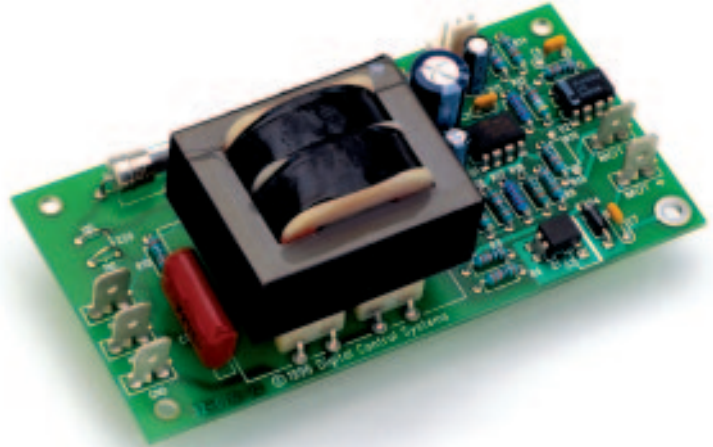
OEM Motor Speed Controller

Compact

Cost Effective

Fully Isolated

110/220 Volt Power



Custom Applications

Oscillating Bath

Rottiseries

Shakers

The compact (2.125" x 4.25") and economical *ServoMax*[™] Model 200 is an analog "pulse width modulated" speed control that directly drives small brush DC motors from 110/220 VAC power. It is ideal for analog speed control applications such as rotisseries, stirrers, fans, etc. where no display of motor RPM is required.

The speed of the DC motor is adjusted with a remote 10K potentiometer. The adjustment range is limited to user-specified maximum and minimum values.

The *ServoMax*[™] Model 200 is supplied as an OEM circuit board assembly designed for stand-off mounting inside the equipment enclosure. It is designed to meet domestic and foreign regulatory agency requirements and is used in equipment certified to UL, CSA and most European standards.

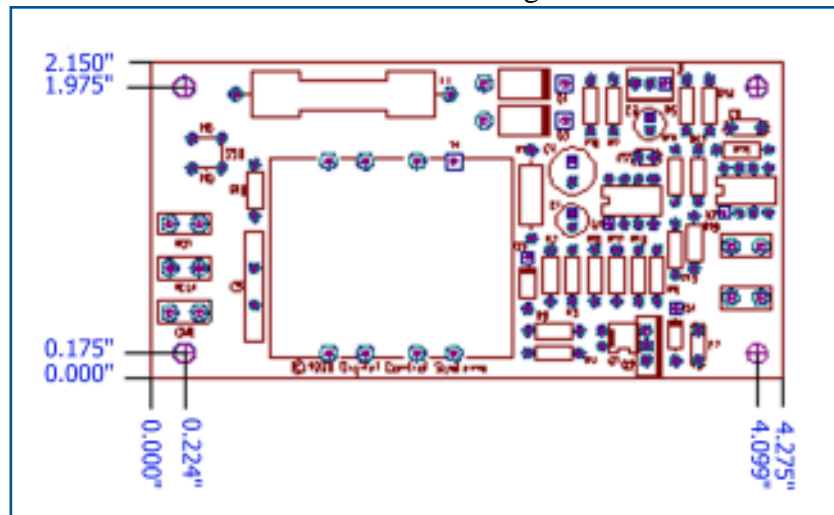
Digital Control Systems, Inc. • 7401 SW Capitol Highway • Portland, OR 97219 • USA
Phone: (503) 246-8110 • Fax: (503) 246-6747 • Toll Free: 1-877-468-6337 • <http://www.dcs-inc.net>

INNOVATION AND TECHNOLOGY

Parameter	Value
Input Power	110 or 220 VAC, 50 - 60 Hz.
Motor Drive Voltage	0 - 30 VDC
Maximum Continuous Motor Current	0.12A
Min. & Max. Speed Limits	Factory-programmed
Speed Control Potentiometer Resistance	10,000 Ohms
Mechanical Dimensions	2.125" x 4.25" footprint 2" min. clearance above circuit board
Power Line Connections	1/4" quick connects (HOT, NEUT, GND)
Motor Connections	3/16" quick connects (MOT+, MOT-)

For complex or specialized applications, DCS will cost-effectively design and manufacture a custom module to your exact specifications. We will help you to add technology and value to your product without consuming your engineering resources. DCS will also assist you in meeting domestic and overseas regulatory agency requirements placed on your products by agencies such as UL, CSA, CE and others.

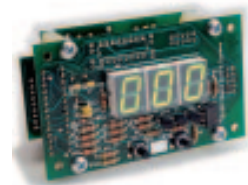
ServoMax™ Model 200 Mounting Dimensions



Digital Control Systems, Inc. manufactures an array of motor speed controllers, including the products pictured at right:



ServoMax™ Model 220



ServoMax™ Model 210

For more information, please contact us at:

Digital Control Systems, Inc. • 7401 SW Capitol Highway • Portland, OR 97219 • USA
 Phone: (503) 246-8110 • Fax: (503) 246-6747 • Toll Free: 1-877-468-6337 • <http://www.dcs-inc.net>

COMMITTED TO YOUR SUCCESS