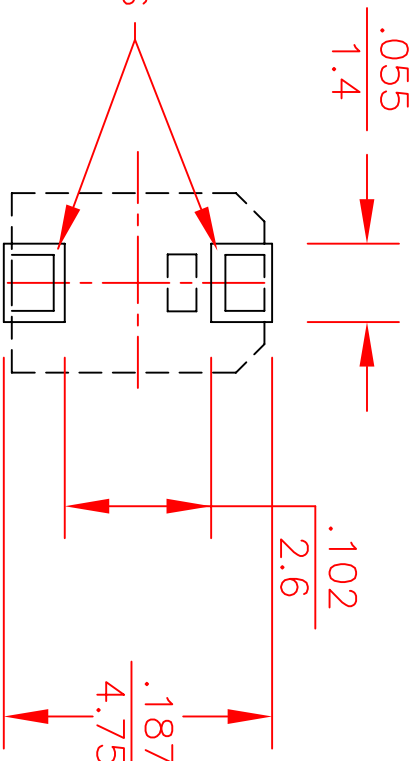
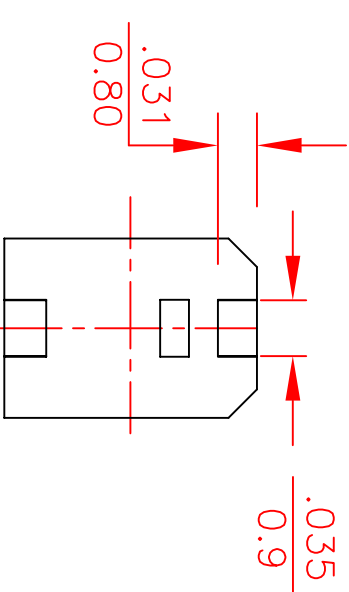
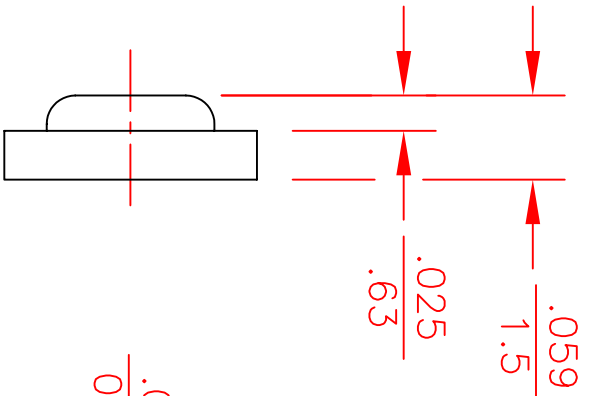
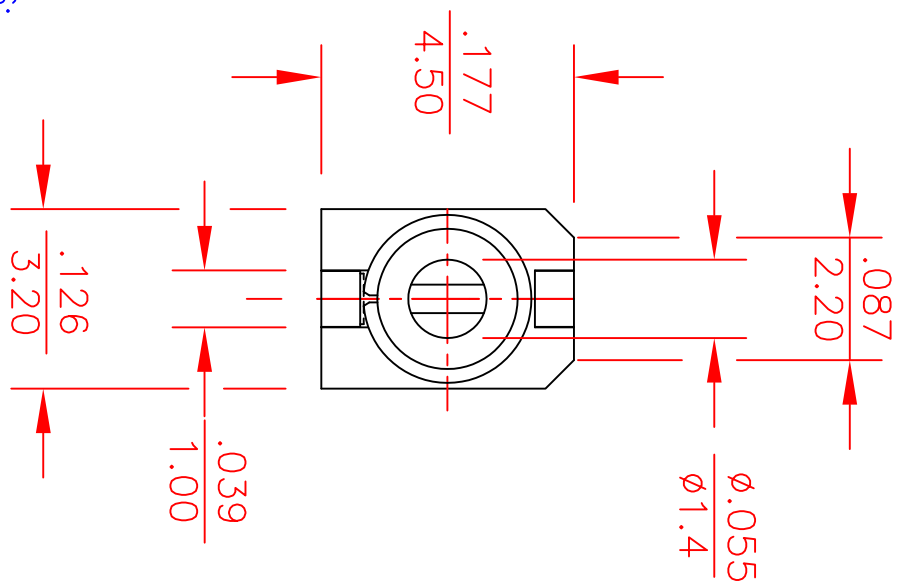


NOTES:
 1. ALL DIMENSIONS IN inches / mm



SOLDERING PADS

SUGGESTED SURFACE MOUNT LAYOUT
 RECOMMENDED THICKNESS OF SOLDER .000 to .005



REV.	DESCRIPTION	DATE	APP.
00	NEW DWG.	9/29/06	S.G.

SPECS	PART NUMBER	COLOR CODE
Capacitance (pF min.) less than	SGC35030	BLACK
Capacitance (pF max.) more than	SGC35060	BLUE
Temperature coefficient (ppm/°C)	SGC35100	IVORY
Q (at 1MHz and Cmax) over	SGC35200	PINK
Insulation resistance	SGC35300	GREEN
Torque	0.14 to 1.0 oz-in / 10 to 72 gf-cm	
DC Working voltage	100 VDC	100 VDC
DC Withstanding voltage	220 VDC	220 VDC
Operating temperature °C	-40 to +85	-40 to +85
Self resonant frequency @ Cmax	2.0 GHz	1.5 GHz

TOLERANCES:	SPRAGUE	GOODMAN	ELECTRONICS INC.
(EXCEPT AS NOTED)	1700	SHAMES DRIVE	WESTBURY, NY 11590
DECIMAL:	xxx ±.016 in	SCALE	8:1
FRACTIONAL:	±.41 mm	DRAWN BY:	D.DITLYA
ANGULAR:	1/64	DATE:	9/29/06
		DRAWING NUMBER	SGC3
		TITLE:	OUTLINE DWG SGC3 PRODUCT LINE
		APPROVED:	S.GRINBERG