

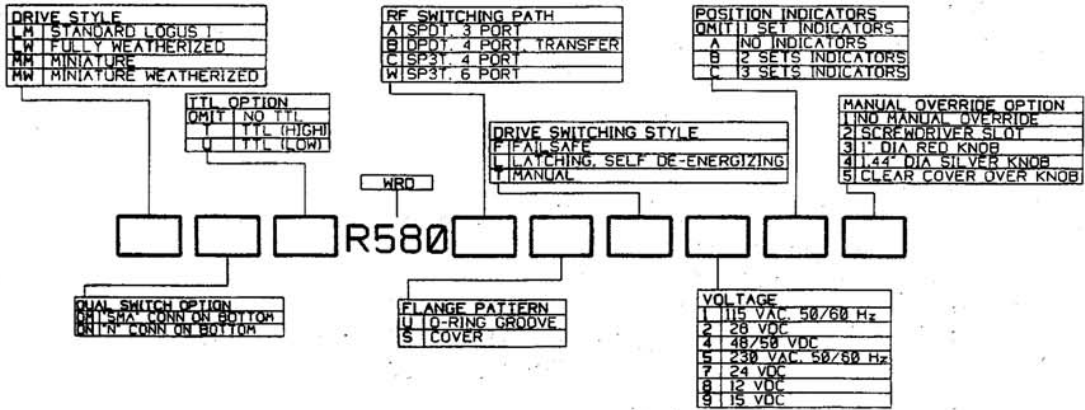
TRI - BAND

C-BAND
5.8 GHz - 6.4 GHz

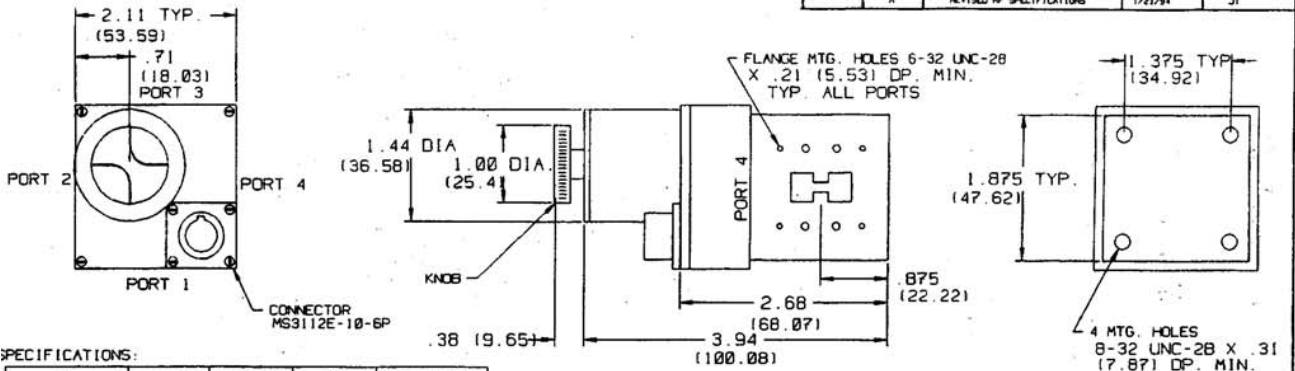
X-BAND
7.9 GHz - 8.4 GHz

Ku-BAND
14 GHz - 14.5 GHz

LOGUS covers WRD 580 with superior broadband products in both waveguide and coaxial RF's. This enables one model the versatility of meeting the application in C,X, and Ku-BAND frequencies. The following pages comprise a variety of sample models commonly used in SATCOM applications.



REVISIONS				
ECN	LTR	DESCRIPTION	DATE	APPROVED
	A	REVISED RF SPECIFICATIONS	1/28/94	JT



SPECIFICATIONS:

RF	C-BAND	X-BAND	Ku-BAND	BROAD BAND
FREQUENCY GHz	5.8 - 6.4	7.9 - 8.4	14.0-14.5	5.8 - 16.0
VSWR MAX.	1.18	1.18	1.15	1.18
INSERTION LOSS	0.20 db	0.05 db	0.20 db	0.20 db
ISOLATION MIN.	70 db	70 db	60 db	70 db
POWER MAX.	9.8 KW CW			

ELECTRICAL:

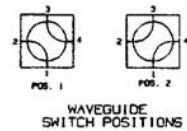
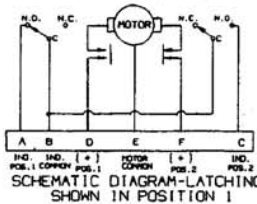
VOLTAGE 28 VDC ± 10%
CURRENT 1.00 AMP MAX. @ 20° C
SWITCHING TIME 100 MILLISECONDS

MECHANICAL:

MATERIAL ALUMINUM (RF ASSY.)
DRIVE REMOVABLE MOTOR DRIVE
ASSEMBLY GENEVA LINKAGE
PRESSURE 10 PSIG (RF HEAD ONLY)
FINISH IRIDIUM PER MIL-C-5541
LIFE PAINT DULL BLACK ENAMEL
1,000,000 CYCLES

ENVIRONMENTAL:

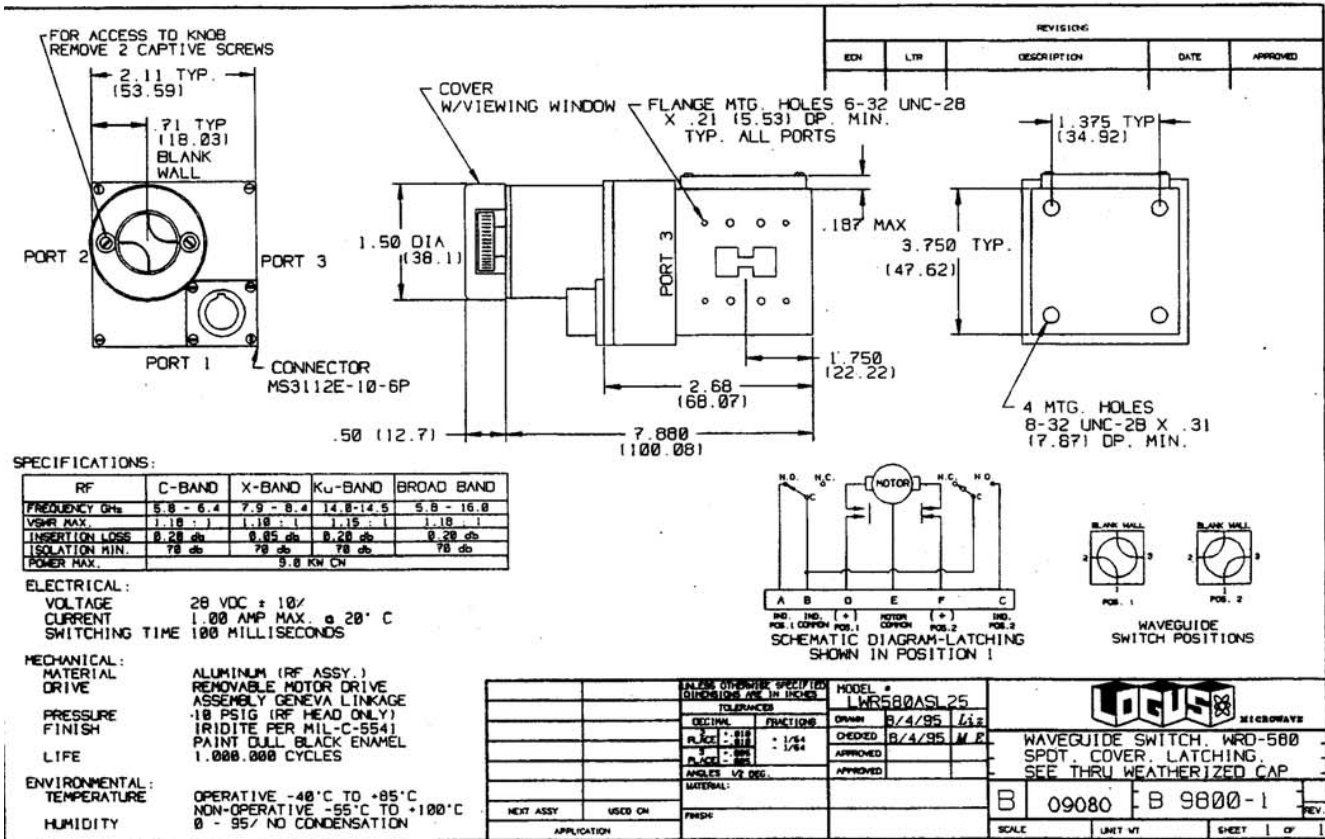
TEMPERATURE OPERATIVE -40°C TO +85°C
NON-OPERATIVE -55°C TO +100°C
HUMIDITY 0 - 95% NO CONDENSATION



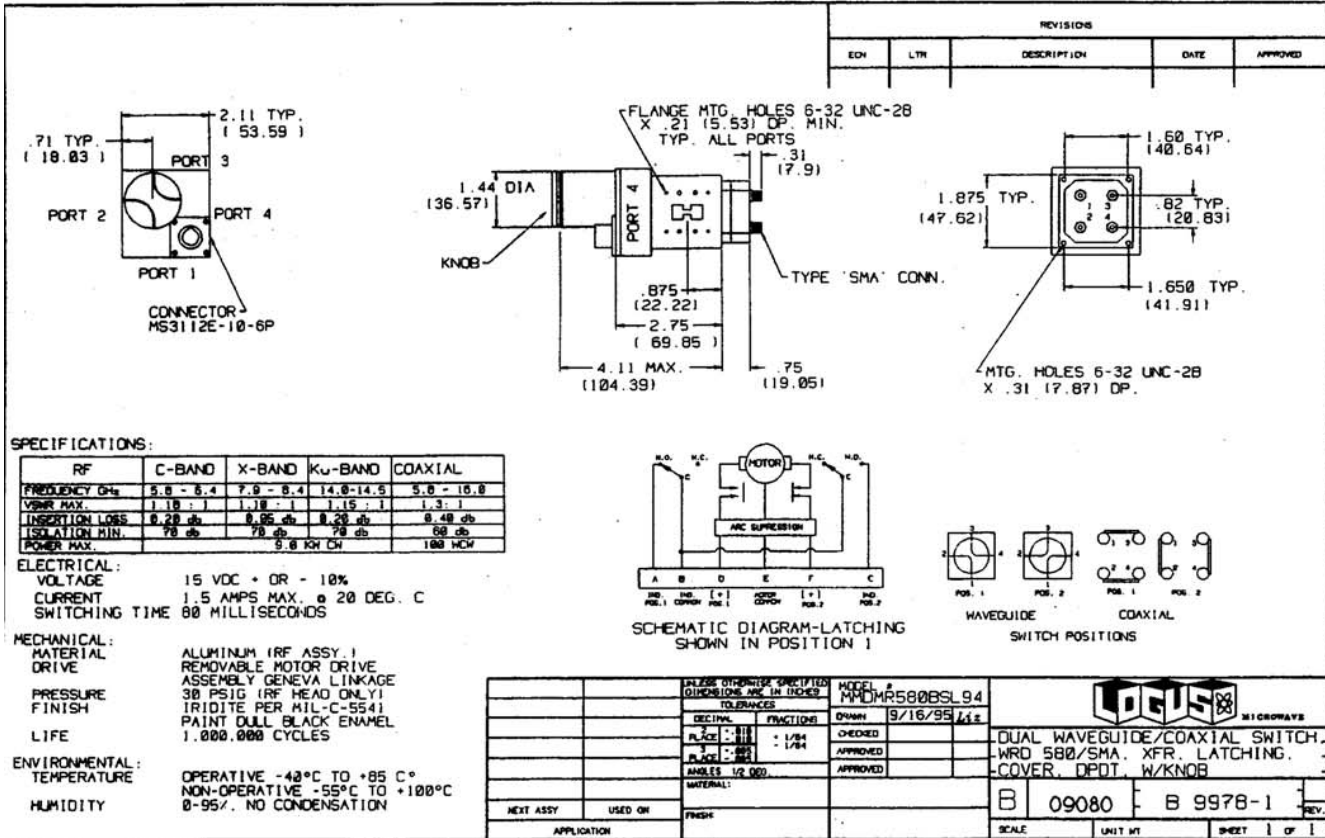
UNLESS OTHERWISE SPECIFIED DIMENSIONS ARE IN INCHES		TOLERANCES		MODEL #	
DECIMAL	FRACTIONS	DRWN	1/28/94	JT	
PLACE - .118	1/84	CHECKED			
PLACE - .015		APPROVED			
PLACE - .005		APPROVED			
ANGLES 1/2 DEG.					
MATERIAL:					
NEXT ASSY.	USED ON	FINISH			
APPLICATION					

WAVEGUIDE SWITCH, WRD 580, DPDT, COVER, LATCHING, 28 VDC, KNOB	
B 09080	B 9853-1
SCALE	UNIT WT
SHEET 1	OF 1

LMR580BSL23



LWR580ASL25



MMDMR580BSI 94