

## Waveguide to Waveguide Adapters,

See Also: [Adapters, W/G to Coax, Endlaunch](#) [Adapters, W/G to Coax, Right Angle](#) [W/G Assemblies](#)

ATM manufactures Waveguide to Waveguide Adapters covering a full frequency range for Rectangular Waveguides, with multiple flange configurations available. For more information feel free to call us and discuss your needs with one of our design engineers.

ATM offers a wide variety of transitions ranging from standard rectangular waveguide adapters in overlapping bands to custom adapters spanning multiple bands. Please call us and discuss your needs with one of our design engineers.



### Rectangular to Rectangular Adapters in Overlapping Bands

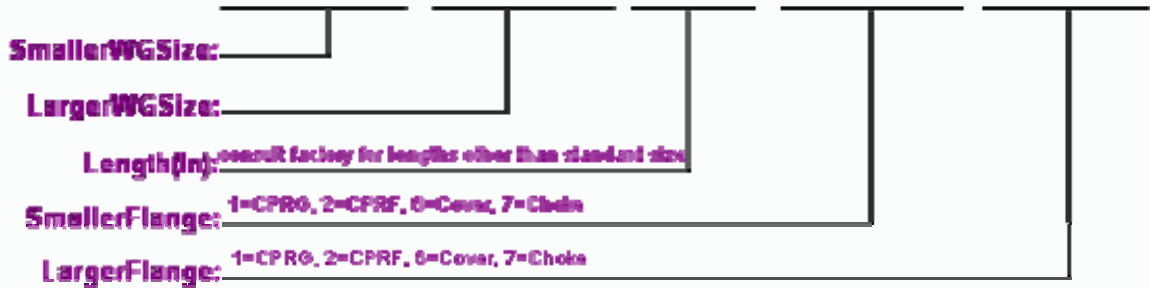


WG Size	Optimum Freq Range GHz	Insertion Length (In)	VSWR	Standard Model Number
WR340 to WR430	<b>2.20 - 2.60</b>	13.0	1.05	340/430-13-2-2
WR284 to WR340	<b>2.60 - 3.30</b>	11.5	1.05	284/340-11.5-6-2
WR229 to WR284	<b>3.30 - 3.95</b>	11.0	1.05	229/284-11-2-6
WR187 to WR229	<b>3.95 - 4.90</b>	10.0	1.05	187/229-10-6-2
WR159 to WR187	<b>4.90 - 5.85</b>	9.0	1.05	159/187-9-2-6
WR137 to WR159	<b>5.85 - 7.05</b>	6.0	1.10	137/159-6-2-2
WR137 to WR159	<b>5.85 - 7.05</b>	8.0	1.05	137/159-8-2-2
WR112 to WR137	<b>7.05 - 8.20</b>	6.0	1.05	112/137-6-6-2
WR102 to WR112	<b>7.00 - 10.0</b>	6.0	1.05	102/112-6-6-6
WR90 to WR112	<b>8.20 - 10.0</b>	6.0	1.08	90/112-6-6-6
WR90 to WR102	<b>8.20 - 11.0</b>	6.0	1.08	90/102-6-6-6
WR75 to WR90	<b>10.0 - 12.4</b>	5.0	1.08	75/90-5-6-6
WR62 to WR75	<b>12.4 - 15.0</b>	2.0	1.17	62/75-2-6-6
WR62 to WR75	<b>12.4 - 15.0</b>	4.0	1.08	62/75-4-6-6
WR51 to WR62	<b>15.0 - 18.0</b>	2.0	1.17	51/62-2-6-6
WR51 to WR62	<b>15.0 - 18.0</b>	4.0	1.08	51/62-4-6-6
WR42 to WR51	<b>18.0 - 22.0</b>	2.0	1.17	42/51-2-6-6

WR42 to WR51	<b>18.0 - 22.0</b>	4.0	1.10	42/51-4-6-6
WR34 to WR42	<b>22.0 - 26.5</b>	2.0	1.17	34/42-2-6-6
WR34 to WR42	<b>22.0 - 26.5</b>	4.0	1.10	34/42-4-6-6
WR28 to WR34	<b>26.5 - 33.0</b>	4.0	1.17	28/34-4-6-6
WR22 to WR28	<b>33.0 - 40.0</b>	2.0	1.17	22/28-2-6-6

### Ordering Information

**Typical Part#: SmallerWGSize/LargerWGSize -Length(In) -SmallerFlange -LargerFlange**



It is possible to change the flanges on the standard model number, but the order you specify them in is important. The first flange corresponds to the smaller WG size and the second flange corresponds to the larger WG size. In order to change the length of a standard model consult factory for more information.

*Example:* P/N **284/340-11.5-6-2** is a:

WR284 to WR340 transition -11.5 inches long - Cover flange on WRD250 - CPRF flange on WG340

See [ATM Flange](#) page for more information on flanges.

**Double Ridge to Rectangular  
Adaptors in Overlapping Bands**  
other models available consult factory for details

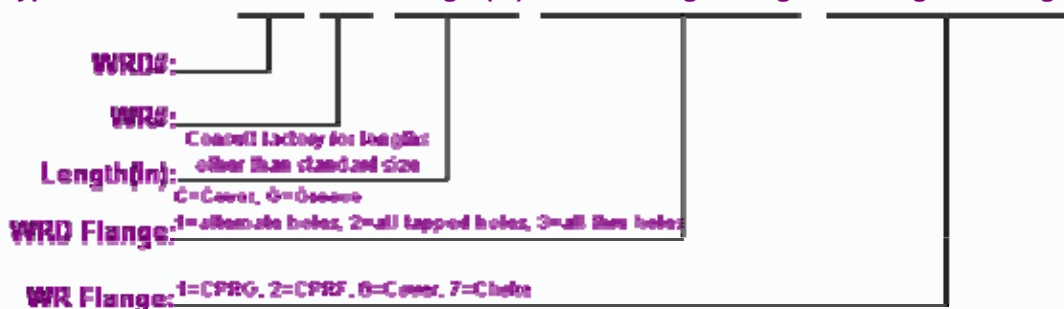


WG Size	Optimum Freq. Range (GHz)	Insertion Length (In)	VSWR max	Standard Model Number
WRD250 to WR284	<b>2.60 - 3.95</b>	12.0	1.15	250/284-12-C3-6
WRD250 to WR187	<b>3.95 - 5.85</b>	11.0	1.15	250/187-11-C3-6
WRD250 to WR159	<b>4.90 - 7.05</b>	10.0	1.15	250/159-10-C3-2
WRD350 to WR159	<b>4.90 - 7.05</b>	9.0	1.15	350/159-9-C3-2
WRD350 to WR137	<b>5.85 - 8.20</b>	8.0	1.15	350/137-8-C3-2
WRD475 to WR137	<b>5.85 - 8.20</b>	8.0	1.15	475/137-8-C3-2
WRD475 to WR112	<b>7.05 - 10.0</b>	6.5	1.15	475/112-6.5-C3-6
WRD580 to WR159	<b>5.80 - 7.05</b>	6.0	1.15	580/159-6-C3-2
WRD580 to WR137	<b>5.90 - 8.40</b>	4.0	1.25-1.35	580/137-4-C3-2
WRD580 to WR137	<b>5.85 - 8.40</b>	5.5	1.25	580/137-5-C3-2
WRD580 to WR112	<b>7.05 - 10.0</b>	4.0	1.15	580/112-4-C3-6
WRD580 to WR102	<b>7.00 - 11.0</b>	5.0	1.15	580/102-5-C3-6
WRD580 to WR90	<b>8.20 - 12.4</b>	5.0	1.15	580/90-5-C3-6
WRD580 to WR75	<b>10.0 - 15.0</b>	4.0	1.15	580/75-4-C3-6
WRD580 to WR62	<b>12.4 - 16.0</b>	4.0	1.15	580/62-4-C3-6
WRD580 to WR51	<b>15.0 - 16.0</b>	4.0	1.15	580/51-4-C3-6
WRD650 to WR159	<b>6.50 - 7.05</b>	6.0	1.25	650/159-6-C3-2
WRD650 to WR137	<b>6.50 - 8.20</b>	6.0	1.15	650/137-6-C3-2
WRD650 to WR112	<b>7.05 - 10.0</b>	5.5	1.15	650/112-5.5-C3-6
WRD650 to WR102	<b>7.00 - 11.0</b>	5.0	1.15	650/102-5-C3-6
WRD650 to WR90	<b>8.20 - 12.4</b>	5.0	1.15	650/90-5-C3-6
WRD650 to WR75	<b>10.0 - 15.0</b>	4.5	1.15	650/75-4.5-C3-6
WRD650 to WR62	<b>12.4 - 18.0</b>	4.0	1.15	650/62-4-C3-6
WRD650 to WR51	<b>15.0 - 18.0</b>	4.0	1.15	650/51-4-C3-6
WRD750 to WR137	<b>7.50 - 8.2</b>	5.0	1.15	750/137-5.0-C3-2
WRD750 to WR112	<b>7.50 - 10.0</b>	4.5	1.15	750/112-4.5-C3-6

WRD750 to WR102	<b>7.50 - 11.0</b>	4.5	1.15	750/102-4.5-C3-6
WRD750 to WR90	<b>8.20 - 12.4</b>	4.0	1.15	750/90-4-C3-6
WRD750 to WR90	<b>8.20 - 12.4</b>	4.5	1.15	750/90-4.5-C3-6
WRD750 to WR75	<b>10.0 - 15.0</b>	4.5	1.15	750/75-4.5-C3-6
WRD750 to WR62	<b>12.4 - 18.0</b>	4.0	1.15	750/62-4-C3-6
WRD750 to WR51	<b>15.0 - 18.0</b>	4.0	1.15	750/51-4-C3-6
WRD180 to WR42	<b>18.0 - 26.5</b>	1.5	1.20	180/42-1.5-C3-6
WRD180 to WR28	<b>26.5 - 40.0</b>	1.5	1.20	180/28-1.5-C3-6

### Ordering Information

**Typical Part#: WRD#/WR# -Length(In) -Double Ridge Flange -Rectangular Flange**



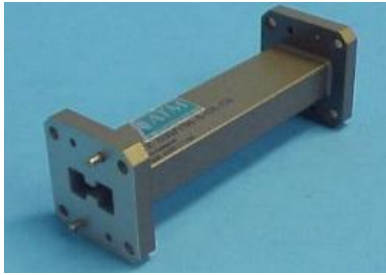
It is possible to change the flanges on the standard model number, but the order you specify them in is important. The first flange corresponds to the double ridge WG and the second flange corresponds to the rectangular WG. In order to change the length of a standard model consult factory for more information.

*Example:* P/N **250/284-12-C3-6** is a:

WRD250 to WR284 transition - 12 inches long - Cover w/thru holes on WRD250 - Cover Flange on WG284

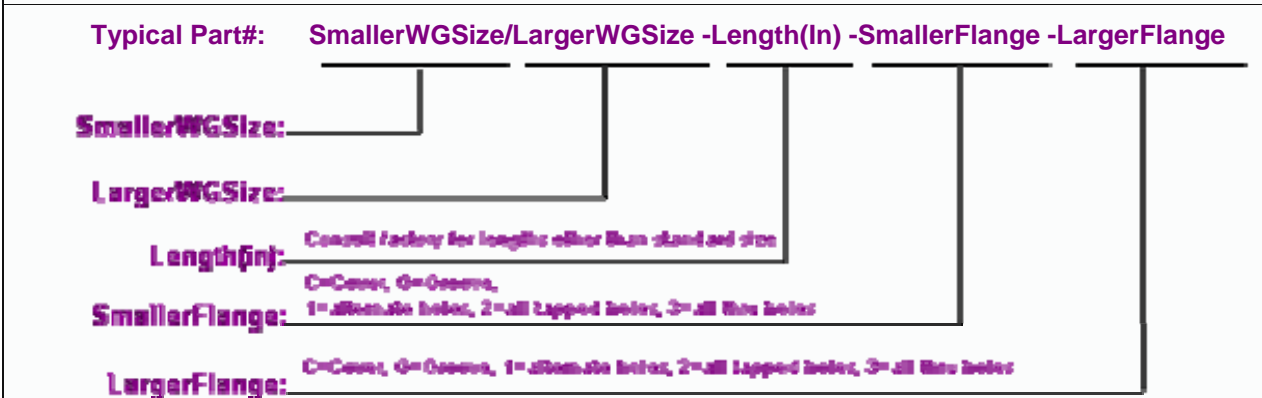
See [ATM Flange](#) page for more information on flanges.

**Double Ridge to Double Ridge  
Adaptors in Overlapping Bands**  
other models available consult factory for details



WG Size	Optimum Freq Range GHz	Insertion Length (In)	VSWR max	Standard Model Number
WRD250 to WRD350	3.50 - 7.80	8.0	1.15	250/350-8-C3-C3
WRD475 to WRD500	5.00 - 11.0	6.5	1.15	475/500-6.5-C3-C3
WRD475 to WRD580	5.80 - 11.0	6.5	1.15	475/580-6.5-C3-C3
WRD475 to WRD650	6.50 - 11.0	6.5	1.15	475/650-6.5-C3-C3
WRD475 to WRD750	7.50 - 11.0	6.5	1.15	475/750-6.5-C3-C3
WRD500 to WRD580	5.80 - 16.0	6.0	1.15	500/580-6-C3-C3
WRD500 to WRD650	6.50 - 18.0	4.0	1.15	500/650-4-C3-C3
WRD500 to WRD650	6.50 - 18.0	6.0	1.15	500/650-6-C3-C3
WRD500 to WRD750	7.50 - 18.0	6.0	1.15	500/750-6-C3-C3
WRD580 to WRD650	6.50 - 16.0	6.0	1.15	580/650-6-C3-C3
WRD580 to WRD750	7.50 - 16.0	6.0	1.15	580/750-6-C3-C3
WRD650 to WRD750	7.50 - 18.0	6.0	1.15	650/750-6-C3-C3

**Ordering Information**



It is possible to change the flanges on the standard model number, but the order you specify them in is important. The first flange corresponds to the double ridge WG and the second flange corresponds to the rectangular WG. In order to change the length of a standard model consult factory for more information.

*Example:* P/N **250/350-8-C3-6** is a:  
WRD250 to WRD350 transition -8 inches long - Cover w/thru holes on WRD250 - Cover Flange on WRD350

See [ATM Flange](#) page for more information on flanges.

<b>Rectangular to Rectangular Adaptor Specials</b> other models available consult factory for details		
<b>WG Size</b>	<b>Insertion Length (In)</b>	<b>Standard Model Number</b>
WR28 to WR90	8.0	28/90-8-6-6
WR42 to WR90	8.0	42/90-8-6-6
WR62 to WR90	6.0	62/90-6-6-6
WR75 to WR112	4.69	75/112-4-6-6
WR75 to WR187	12.0	75/187-12-6-2
WR90 to WR137	10.0	90/137-10-6-2
WR90 to WR187	11.0	90/187-11-6-2
WR90 to WR284	12.0	90/284-12-6-2
WR137 to WR284	10.0	137/284-10-2-2
WR187 to WR284	12.0	187/284-12-2-2