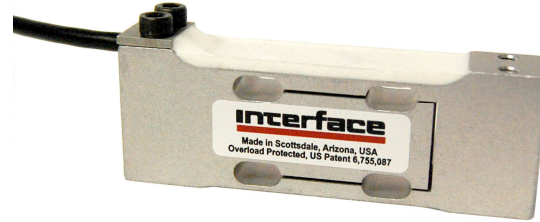


Model MBI Fatigue Rated Mini Beam Overload Protected Load Cell

- Proprietary Interface temperature compensated strain gages
- Performance to .03%
- Low Height - 1 in.
- .0008%/°F temp. effect on output
- 10x overload protection

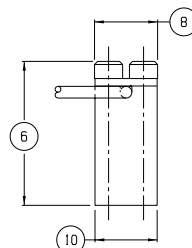
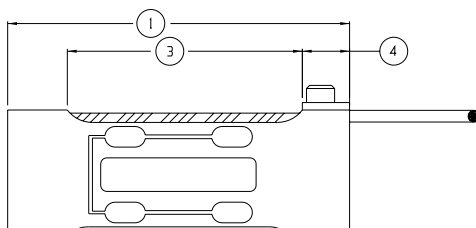
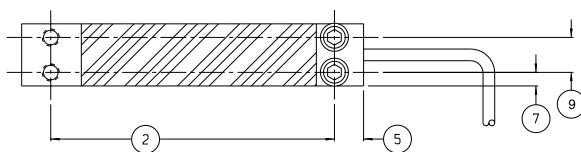


STANDARD CONFIGURATION

5 ft. integral cable (MBI-nn)

DIMENSIONS

See Drawing	CAPACITY	
	U.S (lbf) 2, 5, 10	Metric (N) 10, 20, 50
(1)	2.750	69.90
(2)	2.281	57.94
(3)	1.890	48.00
(4)	0.380	9.70
(5)	0.234	5.94
(6)	1.160	29.50
(7)	0.110	2.79
(8)	0.510	13.00
(9)	0.281	7.14
(10)	0.500	12.70



SPECIFICATIONS

ACCURACY- (MAX ERROR)	
Nonlinearity-% FS	±0.02
Hysteresis-% FS	±0.02
Nonrepeatability-% RO	±0.01
Creep, in 20 min-%	±0.025
TEMPERATURE	
Compensated Range-°F	70 to 170
Operating Range-°F	-40 to 175
Effect on Output- %/°F- MAX	±0.0008
Effect on Zero- % RO/°F- MAX	±0.002
ELECTRICAL	
Rated Output-mV/V (Nominal)	2
Zero Balance- % RO	±1.0
Bridge Resistance- Ohm (Nominal)	350
Excitation Voltage- MAX	15 VDC
Insulation Resistance- Megohm	5000
MECHANICAL	
Calibration	Compression
Safe Overload - % CAP	1000
Cable Length - ft.	5