



Telaire 6713 Series CO₂ Module

NDIR CO₂ Module
designed for
applications that
require high accuracy
in a compact package



The Telaire® T6713 CO₂ Series is ideal for applications where CO₂ levels need to be measured and controlled for indoor air quality and energy saving applications such as demand control ventilation.

All units are factory calibrated to measure CO₂ concentration levels up to 5000 ppm.

Features

- An affordable gas sensing solution for OEMs.
- Eliminates the need for calibration in most applications with Telaire's patented ABC Logic™ software. Lifetime calibration warranty.
- A reliable sensor design based on 20 years of Engineering and manufacturing expertise.
- Flexible CO₂ sensor platform designed to interact with other microprocessor devices.
- Small compact design allowing simple product integration.

Amphenol
Advanced Sensors

Telaire 6713 series CO₂ Module Specifications

Method

Non Dispersive Infrared (NDIR), gold plated optics, diffusion sampling (with Telaire's Patented ABC Logic Self Calibrated Algorithm)

Measurement Range ⁽²⁾

0 to 5000 ppm

Dimensions

1.18 in X 0.787 in X 0.34 in
(30 mm X 20 mm X 8.6 mm)

Accuracy ⁽¹⁾

400-5000 ppm ± 30 ppm ± 3% of reading

Temperature Dependence

5 ppm per °C or 0.5% of the reading per °C, whichever is greater

Stability

< 2% of FS over life of sensor (15 years typical)

Pressure Dependence

0.13% of reading per mm Hg

Calibration Interval

Not required

Response Time

< 3 minutes for 90% step change typical

Signal Update

Every 5 seconds

Warm Up Time

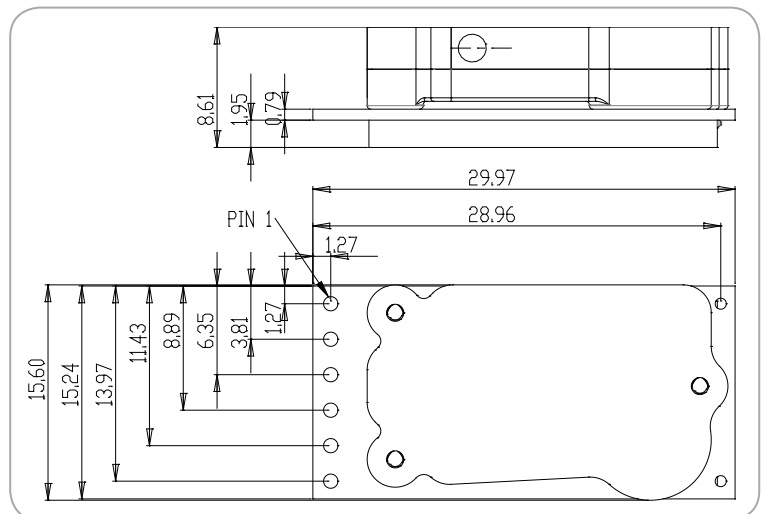
- < 2 minutes (operational)
- 10 minutes (maximum accuracy)

Operating Conditions

- 14°F to 140°F (-10°C to 60°C)
- 0 to 95% RH, non-condensing

Storage Conditions

-22°F to 158°F (-30°C to 70°C)



All dimensions in millimeters (mm)

Output

Digital ⁽³⁾

I²C slave up to 100 kHz

UART @ 19200 Baud w/Modbus support

PWM Output Mode

Two options:

- Cycle period 1002 ms (~1Hz)
- 40 us (25kHz)

Power Supply Requirements ⁽⁴⁾

- 4.5-5.5 VDC
- Peak 200mA (155mA typical)
- Average 25mA (20mA typical)

Interface Connections

Designed for six (6) pin male header with 0.1 in (2.54 mm) spacing. Header not included.

Notes:

- (1) Tolerance based on span gas of ±2%, which adds to the uncertainty, tested at Standard Ambient Temperature and Pressure (SATP).
- (2) Subjecting sensors to environments less than 400 ppm for more than 15 minutes may affect accuracy due to ABC Logic algorithm.
- (3) Please call for detailed product specifications.
- (4) Based on nominal 5VDC input voltage. For best performance, DC supply should be a regulated, low noise power source.

Automatic Background Logic, or ABC Logic, is a patented self-calibration technique that is designed to be used in applications where concentrations will drop to outside ambient conditions (400 ppm) in a 7 day period.

Full accuracy to be achieved utilizing ABC Logic. With ABC Logic enabled, the sensor will typically reach its operational accuracy after 24 hours of continuous operation. Sensor will maintain accuracy specifications with ABC Logic enabled, given that it is at least four times in 21 days exposed to a reference level of 400 ppm.

Note: Applies when used in typical residential ambient air. Consult Telaire if other gases or corrosive agents are part of the application environment.

Pin Designations

Connector Pin-Out	Function/Alternate
1	TX (UART) / I2C_SDA
2	RX (UART) / I2C_SCL
3	V+
4	V- / GND
5	PWM Output / RS485 Flow Control
6	No Connect / Ground / 10k pull down to select interface

Handling and Installation

The T6713 CO₂ OEM modules are infrared gas sensors on a printed circuit board and should be treated carefully. Precautions should be taken to observe specified limits and prevent damage from electrostatic discharge or rough handling. Please refer to ANSI/ESD S20. 20-1999 for more information on preventing ESD damage and IPC 610 Rev. D for more information on proper electronic assembly practices.

Calibration

Telaire does not recommend the customer recalibrate the T6713 module after installation. The sensor ABC Logic algorithm will begin after 24 hours, adjusting the sensor measurement resulting in sensor-to-sensor consistency. If immediate consistency is desired, the sensors may be single point calibrated using pre-mixed reference gas or ambient air measured by a reference sensor.

Available Models

Part Number	Sampling Method	Measurement Range
T6713	Diffusion	0-2000 ppm
T6713-5k	Diffusion	0-5000 ppm

Safety

Before installing, handling, using, or servicing this product, please consult the data sheet and application notes. The product shall be used only within power supply and electrical input and output limits as specified by the datasheet and application guide. Improper use of the product may result in product damage and property loss and/or personal injury. In use of the product, the customer has sole responsibility for designing and implementing a solution which will ensure safe operation (including review of appropriate reliability or required redundancy, mitigation of failure modes, and/or meeting appropriate standards). The customer is responsible for review of any special conditions for use including, but not limited to, environmental conditions, electrical supply, residual risk, etc). The sensor is designed for benign environments. The performance and reliability may be negatively affected in environments that contain corrosive or caustic gases including but not limited to Ammonia, Chlorine, NO_x and Ozone. Telaire makes no warranty, representation or guarantee regarding the suitability of this product for any particular application, including safety critical applications. Nor does Telaire assume any liability arising out of the application or use in any product or circuit. Telaire specifically disclaims all liability without limitation consequential or incidental damages. No statutory or fitness for particular purpose shall be implied.

Amphenol
Advanced Sensors

www.telaire.com

www.amphenol-sensors.com

© 2014 Amphenol Corporation. All Rights Reserved. Specifications are subject to change without notice.
Other company names and product names used in this document are the registered trademarks or
trademarks of their respective owners.

AAS-920-634A-07/2014

SUNSTAR实业集团是集研发、生产、工程、销售、代理经销、技术咨询、信息服务等为一体的高科技企业，是专业高科技电子产品生产厂家，是具有10多年历史的专业电子元器件供应商，是中国最早和最大的仓储式连锁规模经营大型综合电子零部件代理分销商之一，是一家专业代理和分销世界各大品牌IC芯片和电子元器件的连锁经营综合性国际公司。在香港、北京、深圳、上海、西安、成都等全国主要电子市场设有直属分公司和产品展示展销窗口门市部专卖店及代理分销商，已在全国范围内建成强大统一的供货和代理分销网络。我们专业代理经销、开发生产电子元器件、集成电路、传感器、微波光电元器件、工控机/DOC/DOM电子盘、专用电路、单片机开发、MCU/DSP/ARM/FPGA软件硬件、二极管、三极管、模块等，是您可靠的一站式现货配套供应商、方案提供商、部件功能模块开发配套商。专业以现代信息产业（计算机、通讯及传感器）三大支柱之一的传感器为主营业务，专业经营各类传感器的代理、销售生产、网络信息、科技图书资料及配套产品设计、工程开发。我们的专业网站——**中国传感器科技信息网（全球传感器数据库）www.SENSOR-IC.COM** 服务于全球高科技生产商及贸易商，为企业科技产品开发提供技术交流平台。欢迎各厂商互通有无、交换信息、交换链接、发布寻求代理信息。欢迎国外高科技传感器、变送器、执行器、自动控制产品厂商介绍产品到**中国**，共同开拓市场。本网站是关于各种传感器-变送器-仪器仪表及工业自动化大型专业网站，深入到工业控制、系统工程计 测计量、自动化、安防报警、消费电子等众多领域，把最新的传感器-变送器-仪器仪表买卖信息，最新技术供求，最新采购商，行业动态，发展方向，最新的技术应用和市场资讯及时的传递给广大科技开发、科学研究、产品设计人员。本网站已成功为石油、化工、电力、医药、生物、航空、航天、国防、能源、冶金、电子、工业、农业、交通、汽车、矿山、煤炭、纺织、信息、通信、IT、安防、环保、印刷、科研、气象、仪器仪表等领域从事科学研究、产品设计、开发、生产制造的科技人员、管理人员、和采购人员提供满意服务。 **我公司专业生产、代理、经销、销售各种传感器、变送器、敏感元器件、开关、执行器、仪器仪表、自动化控制系统：专门从事设计、生产、销售各种传感器、变送器、各种测控仪表、热工仪表、现场控制器、计算机控制系统、数据采集系统、各类环境监控系统、专用控制系统应用软件以及嵌入式系统开发及应用等工作。如热敏电阻、压敏电阻、温度传感器、温度变送器、湿度传感器、湿度变送器、气体传感器、气体变送器、压力传感器、压力变送、称重传感器、物（液）位传感器、物（液）位变送器、流量传感器、流量变送器、电流（压）传感器、溶氧传感器、霍尔传感器、图像传感器、超声波传感器、位移传感器、速度传感器、加速度传感器、扭距传感器、红外传感器、紫外传感器、火焰传感器、激光传感器、振动传感器、轴角传感器、光电传感器、接近传感器、干簧管传感器、继电器传感器、微型电泵、磁敏（阻）传感器、压力开关、接近开关、光电开关、色标传感器、光纤传感器、齿轮测速传感器、时间继电器、计数器、计米器、温控仪、固态继电器、调压模块、电磁铁、电压表、电流表等特殊传感器。同时承接传感器应用电路、产品设计和自动化工程项目。**

欢迎索取免费详细资料、设计指南和光盘；产品凡多，未能尽录，欢迎来电查询。

更多产品请看本公司产品专用销售网站：

中国传感器科技信息网：<http://www.sensor-ic.com/>工控安防网：<http://www.pc-ps.net/>

电子元器件网：<http://www.sunstare.com/>微波光电产品网：[HTTP://www.rfoe.net/](http://www.rfoe.net/)

消费电子产品网：<http://www.icasic.com/>军工产品网：<http://www.junpinic.com/>

实业科技产品网：<http://www.sunstars.cn/>传感器销售热线：

电话：0755-83607652 83376489 83376549 83370250 83370251

传真：0755-83376182 (0) 13902971329 MSN: SUNS8888@hotmail.com

邮编：518033 E-mail:szss20@163.com QQ: 195847376

技术支持：0755-83394033 13501568376