



GYROSCOPE

Aluminium housing

Dimensions 25 x 16 x 80 mm

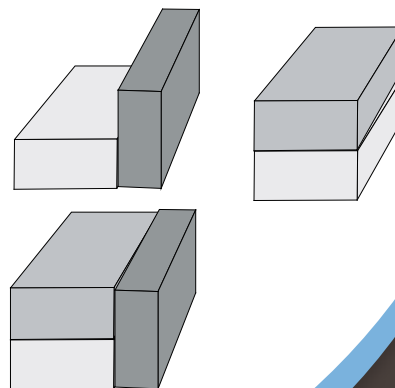
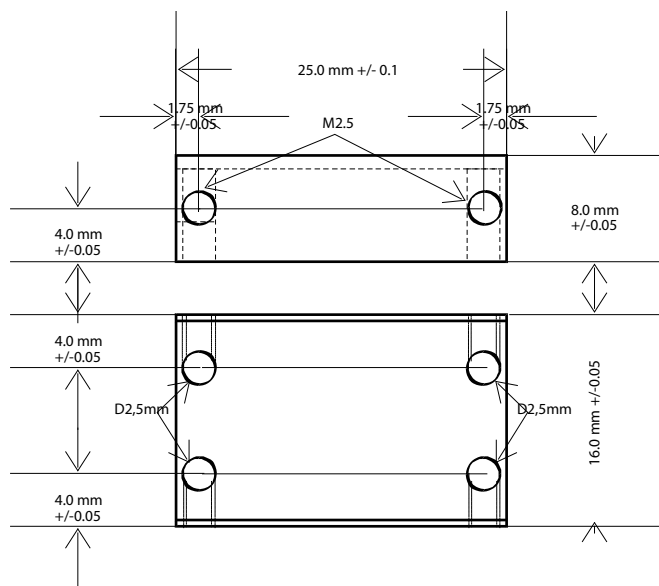
Weight 15 g

+/- 150°/sec

+/- 100°/sec

Range	+/-100 and 150° Sec
Output Signal	2.5V+/-2V
Supply	5 to 16 Volts , 8mA max
Sensitivity drift (-40 to +85 °C)	1% FS
Non linearity	0.1% FS
Zero drift (20 to + 80 °C)	20 mV
Bandwidth	40 HZ
Resonance	14 KHZ
Temperature	-40 to +85 °C

1 metre of 3 x AWG 26 PTFE shielded cable (other length or wires on request)
Cable shield conected to case



In the interest of continuous product improvement, we reserve the right to alter without prior notice the specifications and features described in this document.