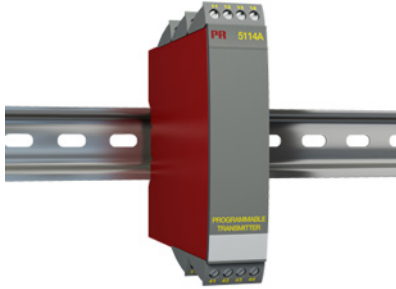


Programmable transmitter



5114A

- Input for RTD, TC, mV, linear resistance, mA, and V
- 3-port 3.75 kVAC galvanic isolation
- Current and voltage output
- Universal voltage supply
- 1- and 2-channel versions
- Loop supply > 17.1 V



Advanced features

- The 5114 transmitter can be configured, with or without a power supply, using the PReset software and the Loop Link communications unit.

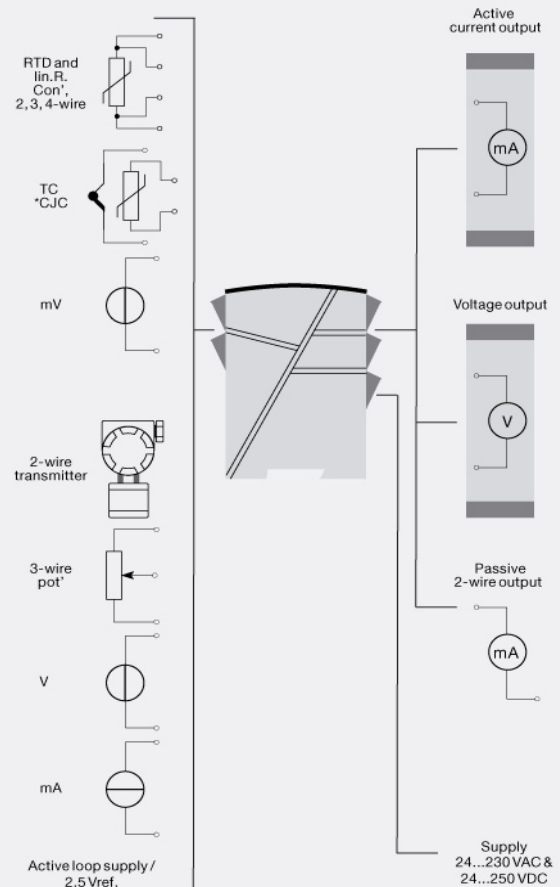
Application

- Jumper selectable inputs for current/voltage or temperature.
- Programmable current (0...100 mA) and voltage (0...250 VDC) inputs.
- Linearized, electronic temperature measurement.
- Conversion of linear resistance variation e.g. from solenoids and butterfly valves or linear movements with attached potentiometer.
- 17.1 VDC loop and 2.5 VDC potentiometer supplies.
- Automatic 4- / 3-wire or programmable 2-wire cable compensation.
- Configurable sensor error detection including NAMUR NE43.

Technical characteristics

- Active or Passive current output and selectable voltage output.
- Separation of circuits in PELV/SELV installations.

Connections



Order:

Type	Version	Input	Channels
5114 A	Standard : A	RTD / TC / R / mA / V / mV : -	Single : A Double : B

Note! For TC inputs with internal CJC, remember to order the CJC connectors type 5910 / 5910 Ex (ch. 1) and 5913 / 5913 Ex (ch. 2).

Environmental Conditions

Specifications range.....	-20°C to +60°C
Calibration temperature.....	20...28°C
Relative humidity.....	< 95% RH (non-cond.)
Protection degree.....	IP20

Mechanical specifications

Dimensions (HxWxD).....	109 x 23.5 x 130 mm
Weight approx.....	225 g
DIN rail type.....	DIN 46277
Wire size.....	1 x 2.5 mm ² stranded wire
Screw terminal torque.....	0.5 Nm

Common specifications

Supply voltage, universal.....	21.6...253 VAC, 50...60 Hz or 19.2...300 VDC
Fuse.....	400 mA SB / 250 VAC
Max. power consumption.....	≤ 3 W (2 channels)
Internal consumption.....	≤ 2 W (2 channels)
Isolation voltage, test / working.....	3.75 kVAC / 250 VAC
Communications interface.....	Loop Link
Signal / noise ratio.....	Min. 60 dB (0...100 kHz)
Response time (0...90%, 100...10%):	
Temperature input (programmable).....	400 ms...60 s
mA / V input (programmable).....	250 ms...60 s
Updating time.....	115 ms (temperature input)
Updating time.....	75 ms (mA / V / mV input)
Signal dynamics, input.....	22 bit
Signal dynamics, output.....	16 bit
Auxiliary voltages: Reference voltage.....	2.5 VDC ±0.5% / 15 mA
Auxiliary supply: 2-wire supply (pin 44...42 and 54...52).....	28...17.1 VDC / 0...20 mA
EMC immunity influence.....	< ±0.5% of span
Extended EMC immunity: NAMUR NE 21, A criterion, burst.....	< ±1% of span

Input specifications

Max. offset.....	50% of selected max. value
RTD input.....	Pt100, Ni100, lin. R
Cable resistance per wire (max.), RTD.....	10 Ω
Sensor current, RTD.....	Nom. 0.2 mA
Effect of sensor cable resistance (3-/4-wire), RTD.....	< 0.002 Ω / Ω
Sensor error detection, RTD.....	Yes
TC input: Thermocouple type.....	B, E, J, K, L, N, R, S, T, U, W3, W5, LR
Cold junction compensation (CJC).....	< ±1.0°C
Sensor error current, TC.....	Nom. 30 μA
Sensor error detection, TC.....	Yes
Current input: Measurement range.....	0...100 mA
Min. measurement range (span), current input.....	4 mA
Input resistance: Supplied unit.....	Nom. 10 Ω + PTC 10 Ω
Input resistance: Non-supplied unit.....	RSHUNT = ∞, VDROPO < 6 V
Voltage input: Measurement range.....	0...250 VDC
Voltage input: Measurement range.....	-150...+150 mV

Min. measurement range (span), voltage input.....	5 mV
Input resistance, voltage input.....	Nom. 10 MΩ (≤ 2.5 VDC)
Input resistance, voltage input.....	Nom. 5 MΩ (> 2.5 VDC)
Input resistance, voltage input.....	Nom. 10 MΩ (mV input)

Output specifications

Max. offset.....	50% of selected max. value
Current output: Signal range.....	0...20 mA
Min. signal range.....	10 mA
Load (max.).....	20 mA/600 Ω/12 VDC
Load stability, current output.....	≤ 0.01% of span/100 Ω
Current limit.....	≤ 28 mA
2-wire 4...20 mA output: Signal range.....	4...20 mA
Load stability, 4...20 mA output.....	≤ 0.01% of span / 100 Ω
Max. load resistance [Ω].....	(Vsupply - 3.5) / 0.023 A
Max. external 2-wire supply.....	29 VDC
Effect of external 2-wire supply voltage variation.....	< 0.005% of span / V
Voltage output: signal range.....	0...10 VDC
Voltage output, min. signal range.....	500 mV
Load (min.).....	500 kΩ
Sensor error indication, current output.....	Programmable 0...23 mA
NAMUR NE 43 Upscale/Downscale.....	23 mA / 3.5 mA
*of span.....	= of the presently selected range

Approvals

EMC.....	EN 61326-1
LVD.....	EN 61010-1
PELV/SELV.....	IEC 364-4-41 and EN 60742
GOST R.....	Yes
DNV Marine.....	Stand. f. Certific. No. 2.4