

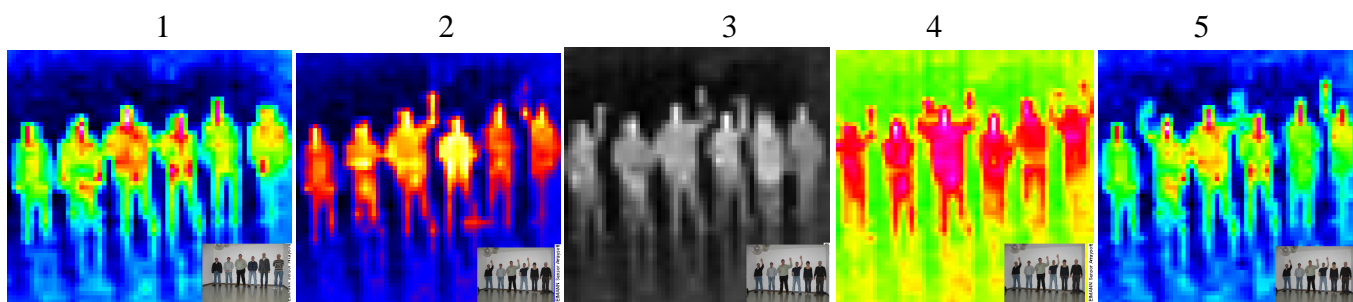


Thermal Images with 32x31 Array Modules

a) Person detection:

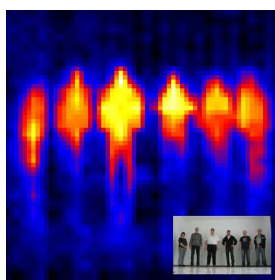
32x31 Array with high performance (multi lens optics)

– difference 1...5 is only various false colour modes of quick start kit:

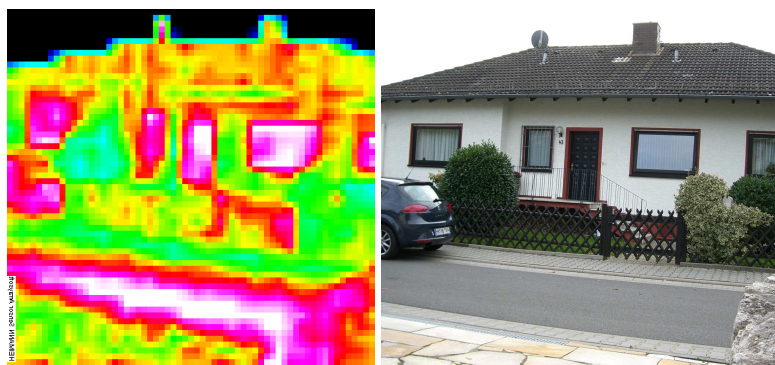


b) Person detection - Low cost option: 32x31 Array with single Ge lens $f=7\text{ mm}$

- Colour mode is same as Number 2 with multi lens



c) Building Thermography (32x31 Array with multi lens optics):



d) Fever detection (32x31 Array with multi lens optics):

