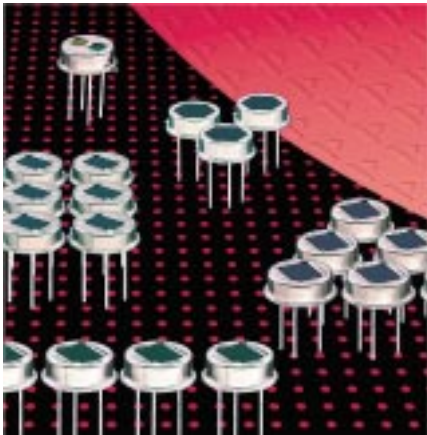


Motion Detection Applications

Pyroelectric Detector LHi 1128

Four Elements

Single FET Output and optical window

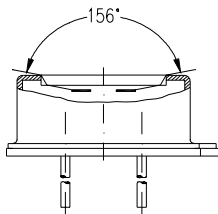


Quad element design

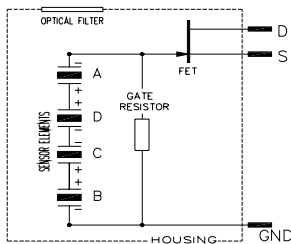
Designed for ceiling mount applications

The **LHi 1128** pyroelectric infrared detector is a special design for motion control in ceiling mount applications. It includes a Quad type pyroelectric ceramic with 4 sensitive elements connected to one FET in source follower connection. Thus it offers a single channel output.

The **LHi 1128** detector is available in **TO-5** housing with infrared filter.



Field of View



Parameters	LHi 1128			
	min	typical	max	units condition
Element size		1x1		mm ² (4 elements)
Responsivity	6 000	8 000		V/W 100°C, 1 Hz
Match		1	10	%
Noise		40	100	µVpp 25°C, 0,3...10Hz
Offset Voltage	0,2		1,55	V R _s =47kΩ, 25°C
D*	5x10 ⁻⁷	19x10 ⁻⁷		cm √Hz/W 1Hz Bw, 100°C, 1 Hz
Output Impedance		5	10	kΩ R _s =47kΩ, 25°C
Operating Voltage	2		12	V R _s =47kΩ, 25°C
Field of View, horizontal		156°		unobstructed
vertical		144°		unobstructed
Operating Temperature	40		85	°C non permanent
Storage Temperature	-40		85	°C non permanent

